

Metal Products Company

(541) 747-6435 ~ 1 (800) 345-2069 ~ Fax: (541) 747-6641
1652 N. 32nd ~ P.O. Box 703 ~ Springfield, Oregon 97477

www.metalproducts.com



Electrical Products

Metal Products Company has been in the business of manufacturing protection and strapping for the construction industry for over 25 years. We offer a wide variety of protection and strapping products to supply your project. Many of our protection products are required by building codes through out the country, and while building codes may vary from state to state, we pride ourselves on offering as many products as possible to comply with building codes around the country.

We pride ourselves on being an American manufacturer, and because of this, we use all domestically bought steel. All of our products are proudly made in the USA.

Index

Product:	Page(s) #:	Product:	Page(s) #:
Safety Plates	2	One Hole Pipe Straps	8
Interlocking Safety Plates	3	U-Bolts	9
Self-Nailing FHA Plates/Stud Guards	3	Mast Guy Kits	9
Safety Sleeves	4	Flex Collars	9
Boca Plates	4	Plate Insulators	10
Plate Straps	5	Spool Racks	10
Plumbers Tape	6	Clamp-on Insulators	11
J-Nails	6	Clevis Insulators	11
Two Hole Pipe Straps	7	Ceiling Cover Plate	12

For More Information, Call 1-800-345-2069

Metal Products Company

(541) 747-6435 ~ 1 (800) 345-2069 ~ Fax: (541) 747-6641

1652 N. 32nd ~ P.O. Box 703 ~ Springfield, Oregon 97477

www.metalproducts.com

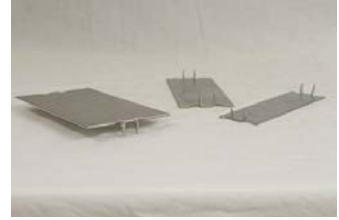


Wire and Pipe Protection

Safety Plates

Also known as Stud Guards, and Nail Plates.

Catalog #	Description	Gauge	Case quantity	Case Wt.
14 Gauge Heavy Duty Plates				
SP314500	1-1/2" X 3"	14	500	42
SP514100	1-1/2" X 5"	14	100	13
SP514100-3	3" X 5"	14	100	60
16 Gauge				
<i>The 16 GA steel used on all safety plates conforms with electrical & plumbing standards.</i>				
SP316100	1-1/2" X 3"	16	100	7
SP316500	1-1/2" X 3"	16	500	35
SP416100	1-1/2" X 4"	16	100	10
SP516100	1-1/2" X 5"	16	100	11
SP516250	1-1/2" X 5"	16	250	27
SP16100	1-1/2" X 6"	16	100	14
SP516100-2	2" X 5"	16	100	15
SP516100-3	3" X 5"	16	100	23
SP516100-3	3" X 6"	16	100	28
18 Gauge				
SP318100	1-1/2" X 3"	18	100	4
SP518100	1-1/2" X 5"	18	100	8
SP618100	1-1/2" X 6"	18	100	10
SP518100-2	2" X 5"	18	100	9
SP518100-3	3" X 5"	18	100	13
20 Gauge				
SP320100	1-1/2" X 3"	20	100	4
SP520100	1-1/2" X 5"	20	100	7
SP620100	1-1/2" X 6"	20	100	8
SP520100-2	2" X 5"	20	100	8
SP520100-3	3" X 5"	20	100	13



For More Information, Call 1-800-345-2069

Metal Products Company

(541) 747-6435 ~ 1 (800) 345-2069 ~ Fax: (541) 747-6641

1652 N. 32nd ~ P.O. Box 703 ~ Springfield, Oregon 97477

www.metalproducts.com



Wire and Pipe Protection, cont.

Interlocking Safety Plates

Catalog #	Description	Gauge	Case Qty.	Case Wt.
SP16100-IL	1-1/2" X 6"	16	100	14
SP618100-IL	1-1/2" X 6"	18	100	10
SP620100-IL	1-1/2" X 6"	20	100	8



Stud Guards/Self-Nailing FHA Plates

Catalog #	Description	Gauge	Case Qty.	Case Wt.
16 Gauge				
SP0916	1-1/2" X 9"	16	100	21
SP1216	1-1/2" X 12"	16	100	27
SP1816	1-1/2" X 18"	16	100	42
SP2416	1-1/2" X 24"	16	100	54
18 Gauge				
SP0918	1-1/2" X 9"	18	100	16
SP1218	1-1/2" X 12"	18	100	21
SP1818	1-1/2" X 18"	18	100	32
SP2418	1-1/2" X 24"	18	100	42
20 Gauge				
SP0920	1-1/2" X 9"	20	100	15
SP1220	1-1/2" X 12"	20	100	19
SP1820	1-1/2" X 18"	20	100	28
SP2420	1-1/2" X 24"	20	100	37



For More Information, Call 1-800-345-2069

Metal Products Company

(541) 747-6435 ~ 1 (800) 345-2069 ~ Fax: (541) 747-6641

1652 N. 32nd ~ P.O. Box 703 ~ Springfield, Oregon 97477

www.metalproducts.com



Wire and Pipe Protection, cont.

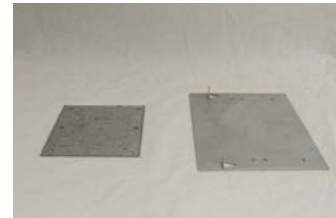
Safety Sleeves

Catalog #	Description	Gauge	Case Qty.	Case Wt.
SS-15	1-1/2"	16	1,000	53
SS-30	3"	16	500	56
SS-35	3-1/2"	16	500	68
SST-15	1-1/2" Tapered	16	1,000	57
SST35	3-1/2" Tapered	16	500	68



Boca Plates Many sizes available, contact factory.

Catalog #	Description	Gauge	Case Qty.	Case Wt.
PS0616-3.5-1 HOLE	3-1/2" X 6"	16	50	18
PS0616-3.5-SN	3-1/2" X 6" Self Nailer	16	50	18
PS816-3.5-SN	3-1/2" X 8" Self Nailer	16	50	24
PS5416	5" X 4"	16	50	17
PS5416-SN	5" X 4" Self Nailer	16	50	17
PS5516-SN	5" X 5" Self Nailer	16	50	21
PS5816	5" X 8"	16	50	35
PS5816-SN	5" X 8" Self Nailer	16	50	35
PS6816	6" X 8"	16	50	40
PS1216-6 (6 or 8 HOLE)	6" X 12"	16	25	30
PS1816-3.5-2 HOLE	3-1/2" X 18"	16	25	28
PS1816-5 (6 or 8 HOLE)	5" X 18"	16	25	41
PS1816-6 (6 or 8 HOLE)	6" X 18"	16	25	47
PS2416-6 (6 or 8 HOLE)	6" X 24"	16	25	62



For More Information, Call 1-800-345-2069

Metal Products Company

(541) 747-6435 ~ 1 (800) 345-2069 ~ Fax: (541) 747-6641

1652 N. 32nd ~ P.O. Box 703 ~ Springfield, Oregon 97477

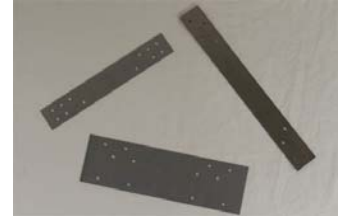
www.metalproducts.com



Wire and Pipe Protection, cont.

Plate Straps Available with 4, 6 or 8 holes on each end.

Catalog #	Description	GA	Case Qty.	Case Wt.
12 GAUGE				
PS0612	1 1/2" x 6"	12	100	20
PS0912	1 1/2" x 9"	12	50	14
PS1212	1 1/2" x 12"	12	50	21
PS1812	1 1/2" x 18"	12	50	28
PS2412	1 1/2" x 24"	12	50	42
PS0612-3	3" x 6"	12	100	32
PS0912-3	3" x 9"	12	25	14
PS1212-3	3" x 12"	12	25	20
PS1812-3	3" x 18"	12	25	28
PS2412-3	3" x 24"	12	25	40
16 GAUGE				
PS0616 (1, 2 or 3 Hole)	1 1/2" x 6"	16	100	14
PS0916	1 1/2" x 9"	16	100	21
PS1216	1 1/2" x 12"	16	100	27
PS1816	1 1/2" x 18"	16	100	42
PS2416	1 1/2" x 24"	16	100	54
PS3616	1 1/2" x 36"	16	25	22
PS0616-3	3" x 6"	16	100	28
PS0916-3	3" x 9"	16	50	21
PS1216-3	3" x 12"	16	50	27
PS1816-3	3" x 18"	16	50	42
PS2416-3	3" x 24"	16	50	56
PS3616-3	3" x 36"	16	25	43
18 GAUGE				
PS0318	1 1/2" x 3"	18	100	5
PS0618	1 1/2" x 6"	18	100	11
PS0918	1 1/2" x 9"	18	100	16
PS1218	1 1/2" x 12"	18	100	21
PS1818	1 1/2" x 18"	18	100	32
PS2418	1 1/2" x 24"	18	100	42
PS0618-3	3" x 6"	18	100	24
PS0918-3	3" x 9"	18	50	24
PS1218-3	3" x 12"	18	50	20
PS1818-3	3" x 18"	18	50	30
PS2418-3	3" x 24"	18	50	40



For More Information, Call 1-800-345-2069

Metal Products Company

(541) 747-6435 ~ 1 (800) 345-2069 ~ Fax: (541) 747-6641

1652 N. 32nd ~ P.O. Box 703 ~ Springfield, Oregon 97477

www.metalproducts.com



Conduit Hanging

Plumbers Tape

Catalog #	Description	GA	Case Qty. Per Ft.	Case Wt.
Galvanized with alternating nail and bolt holes. <i>All bolt holes available.</i>				
PT28###	3/4" Available in 10', 50', & 100' rolls	28	1000'	30
PT26###	3/4" Available in 10', 50', & 100' rolls	26	1000'	30
PT24###	3/4" Available in 10', 50', & 100' rolls	26	1000'	47
PT22###	3/4" Available in 10', 50', & 100' rolls	28	1000'	55
PT20###	3/4" Available in 10', 50', & 100' rolls	26	1000'	70
Copper Clad with alternating nail and bolt holes.				
PT24###-CC	3/4" Available in 10', 50', & 100' rolls	24	1000'	47
PT20###-CC	3/4" Available in 10', 50', & 100' rolls	20	1000'	70
Earthquake Strap				
PT16010	7/8" Available in 10' strips only	16	250'	38



J-Hooks

Catalog #	Description	Gauge	Inside Box	Case Qty.	Case Wt.
Galvanized					
12GAJN	1/2" Galvanized	12	100	1,000	17
34GAJN	3/4" Galvanized	12	100	1,000	21
1GAJN	1" Galvanized	12	100	1,000	27



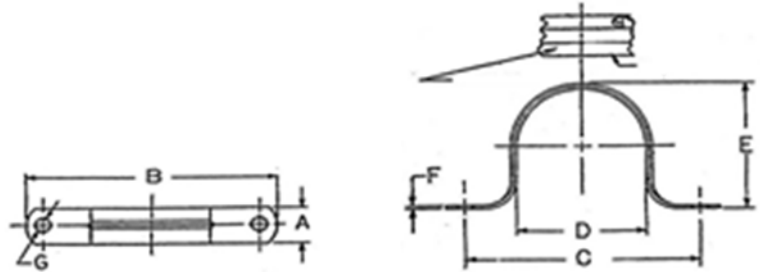
For More Information, Call 1-800-345-2069

Metal Products Company

(541) 747-6435 ~ 1 (800) 345-2069 ~ Fax: (541) 747-6641

1652 N. 32nd ~ P.O. Box 703 ~ Springfield, Oregon 97477

www.metalproducts.com



Two Hole Pipe Straps

Catalog #	Description	A	B	C	D	E	F	G	Case Quantity	Case Wt
Galvanized										
For E.M.T. Thin Wall (Conduit)										
EMT050	1/2" EMT	0.625	2.140	1.600	0.706	0.750	22 GA	0.187	250	3.5
EMT075	3/4" EMT	0.625	2.288	1.715	0.922	1.015	22 GA	0.187	200	3.3
EMT100	1" EMT	0.750	2.750	2.140	1.163	1.235	20 GA	0.250	100	2.7
EMT125	1 1/4" EMT	0.750	3.520	2.750	1.510	1.540	20 GA	0.250	50	1.8
EMT150	1 1/2" EMT	0.750	3.770	3.141	1.740	1.785	20 GA	0.250	50	2.3
EMT200	2" EMT	0.750	4.453	3.812	2.147	2.270	20 GA	0.250	25	1.5
For RIGID Conduit and Plastic Pipe										
RPS025	1/4" RIGID	0.625	1.875	1.385	0.480	0.540	22 GA	0.187	250	4.4
RPS038	3/8" RIGID	0.625	2.270	1.660	0.630	0.700	22 GA	0.187	250	5.6
RPS050	1/2" RIGID	0.625	2.270	1.765	0.840	0.870	22 GA	0.187	250	6.0
RPS075	3/4" RIGID	0.625	2.355	1.850	1.050	1.130	22 GA	0.187	150	1.9
RPS100	1" RIGID	0.750	2.940	2.315	1.315	1.370	20 GA	0.250	100	4.7
RPS125	1 1/4" RIGID	0.750	3.672	2.925	1.660	1.725	20 GA	0.250	50	2.9
RPS150	1 1/2" RIGID	0.750	3.922	3.165	1.890	1.940	20 GA	0.250	50	3.2
RPS200	2" RIGID	0.750	5.015	4.188	2.375	2.410	18 GA	0.270	25	2.5
RPS200-H	2" RIGID (Heavy Duty)	1.000	5.040	4.250	2.335	2.410	18 GA	0.270	25	2.7
Not Snap On										
RPS250	2 1/2" RIGID	1.000	5.720	4.688	2.875	3.050	16 GA	0.312	25	4.0
RPS300	3" RIGID	1.000	6.578	5.515	3.500	3.670	16 GA	0.312	20	3.9
RPS350	3 1/2" RIGID	1.000	7.156	6.125	4.000	3.975	16 GA	0.312	15	3.3
RPS400	4" RIGID	1.000	7.718	6.718	4.500	4.700	16 GA	0.312	10	2.4
RPS600	6" RIGID	1.000	10.250	9.250	6.715	6.775	16 GA	0.312	20	6.3
Copper Clad For RIGID Copper Pipe										
CCPS025	1/4" RIGID	0.500	1.635	1.100	0.380	0.410	24 GA	0.187	500	2.5
CCPS038	3/8" RIGID	0.500	1.835	1.315	0.500	0.520	24 GA	0.187	500	2.9
CCPS050	1/2" RIGID	0.500	1.775	1.270	0.645	0.630	24 GA	0.187	250	1.5
CCPS075	3/4" RIGID	0.500	2.125	1.600	0.920	0.905	24 GA	0.187	150	3.0
CCPS100	1" RIGID	0.750	2.895	2.185	1.140	1.145	22 GA	0.187	100	2.7
CCPS125	1 1/4" RIGID	0.750	3.400	2.635	1.400	1.385	22 GA	0.285	50	1.8
CCPS150	1 1/2" RIGID	0.750	4.160	3.105	1.675	1.640	22 GA	0.285	50	2.3
CCPS200	2" RIGID	0.750	4.580	3.590	2.155	2.155	22 GA	0.285	25	1.5

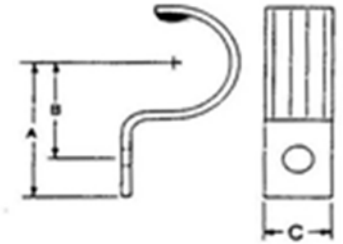
For More Information, Call 1-800-345-2069

Metal Products Company

(541) 747-6435 ~ 1 (800) 345-2069 ~ Fax: (541) 747-6641

1652 N. 32nd ~ P.O. Box 703 ~ Springfield, Oregon 97477

www.metalproducts.com



One Hole Pipe Straps

		Dimension Chart				Packaging Information		
Catalog #	Description	A	B	C	Gauge	Inside Box	Case Qty.	Case Wt.
Galvanized								
For E.M.T. Thin Wall								
EOH038	3/8" BX Cable	1.165	0.880	0.625	18	100	1,000	16
EOH050	1/2" EMT	1.360	0.985	0.625	16	100	1,000	25
EOH075	3/4" EMT	1.425	1.010	0.625	16	100	1,000	32
EOH100	1" EMT	1.545	1.290	0.750	14	50	500	27
EOH125	1-1/4" EMT	1.805	1.355	0.875	14	25	250	45
EOH150	1-1/2" EMT	2.440	1.814	0.875	13	25	250	66
EOH200	2" EMT	2.859	2.109	0.875	12	25	250	47
For RIGID Conduit and Plastic Pipe								
ROH050	1/2" RIGID	1.281	0.890	0.570	14	100	1,000	35
ROH075	3/4" RIGID	1.406	1.015	0.570	14	100	1,000	43
ROH100	1" RIGID	1.562	1.156	0.570	14	50	500	30
ROH125	1-1/4" RIGID	1.318	1.114	0.875	12	N/A	25	2
ROH150	1-1/2" RIGID	1.710	1.600	0.875	12	N/A	25	2
ROH200	2" RIGID	2.056	1.542	0.875	12	N/A	25	3

For More Information, Call 1-800-345-2069

Metal Products Company

(541) 747-6435 ~ 1 (800) 345-2069 ~ Fax: (541) 747-6641

1652 N. 32nd ~ P.O. Box 703 ~ Springfield, Oregon 97477

www.metalproducts.com



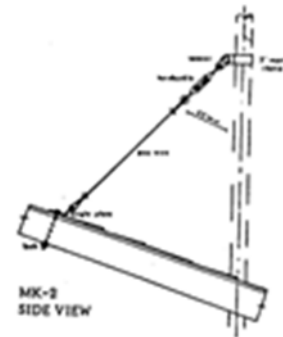
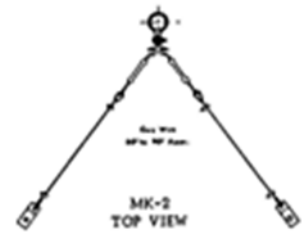
U-Bolts

Catalog #	Description	Conduit Size	Case Qty.	Case Wt.
5/16" Diameter Stock				
5U	2-3/8" X 5"	2" Rigid	50	13
7U	2-3/8" X 7"	2" Rigid	50	16
9U	2-3/8" X 9"	2" Rigid	50	19
11U	2-3/8" X 11"	2" Rigid	50	22



Mast Guy Kits

Catalog #	Description	Case Qty.	Case Wt.
MK-2	Kit for 2" Mast	10	10
MKR-2	Rigid Kit for 2" Mast	10	10
MK-3	Kit for 3" Mast	10	10
MKR-3	Rigid Kit for 3" Mast	10	10



Flex Collars

Catalog #	Description	Size	GA	Case Qty.	Case Wt.
YMF 1-1/2	9" x 12"	1 1/2"	26	12	9
YMF2	11" x 14"	2"	26	12	9
YMF3	12" x 16"	3"	26	12	12
YMF4	12" x 16"	4"	26	12	12



For More Information, Call 1-800-345-2069

Metal Products Company

(541) 747-6435 ~ 1 (800) 345-2069 ~ Fax: (541) 747-6641

1652 N. 32nd ~ P.O. Box 703 ~ Springfield, Oregon 97477

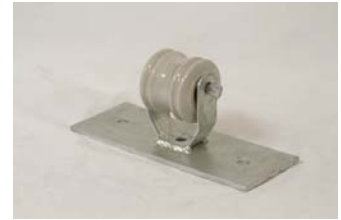
www.metalproducts.com



Insulators

Plate Insulators

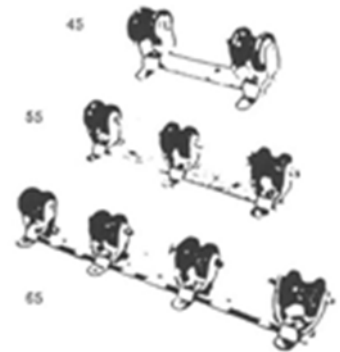
Catalog #	Description	Case Qty.	Case Wt.
325	Plate Wire Holder	15	45
325-S	Plate Wire Holders/Swivel	15	45
315	Plate Wire Holder	25	51
315-S	Plate Wire Holder/Swivel	25	51
95	Triplex Anchor	20	41



- Hot Dipped Galvanized.
- Base plates are 3/16 thick X 3" wide. #95, #315, & #315-S are 8" long with square holes for 3/8" carriage or lag bolts.
- #325 & #325-S bases are 12" long and have four 5/16" X 3" lag bolts included.

Spool Racks

Catalog #	Description	Case Qty.	Case Wt.
45	Medium Duty 2 Spool	1	3
55	Medium Duty 3 Spool	1	4
65	Medium Duty 4 Spool	1	5



- Hot Dipped Galvanized.
- Bases are made of 1/2" X 1-1/4" channel iron.
- Spools are spaced at 6-1/2" O.C.

For More Information, Call 1-800-345-2069

Metal Products Company

(541) 747-6435 ~ 1 (800) 345-2069 ~ Fax: (541) 747-6641

1652 N. 32nd ~ P.O. Box 703 ~ Springfield, Oregon 97477

www.metalproducts.com



Insulators, cont.

Clamp-On Insulators

Catalog #	Fits RIGID Conduit Size	Case Qty.	Case Wt.
Electro Galvanized			
200N	1-1/4" thru 2"	50	50
2000	1-1/4" thru 3"	25	31
Hot Dip Galvanized			
300-H	1-1/4" thru 2"	50	53
3000-H	1-1/4" thru 3"	25	34
O35	3-1/2"	20	30
OO4	4"	20	34



Clevis Insulators

Catalog #	Description	Case Qty.	Case Wt.
355	Light Duty 2-1/4" Clevis of 1/8" X 1" Steel. Accepts 3/8" Bolts with 2-1/4" Spool.	25	24
365	Medium Duty 4-1/4" Clevis of 3/16" X 1-1/2" Steel. Accepts 5/8" Bolts with 2-1/4" Spool.	25	36
375	Heavy Duty 5-1/4" Clevis of 3/16" X 1-1/2" Steel. Accepts 5/8" Bolts with 3" Spool.	20	53



For More Information, Call 1-800-345-2069

Metal Products Company

(541) 747-6435 ~ 1 (800) 345-2069 ~ Fax: (541) 747-6641

1652 N. 32nd ~ P.O. Box 703 ~ Springfield, Oregon 97477

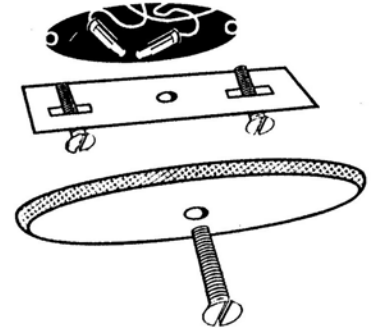
www.metalproducts.com



Ceiling Cover Plate-Adjustable

Catalog #	Description	Case Qty.
CCP-12	5" White Canopy	12
CCP-50	5" White Canopy	50
CCP-100	5" White Canopy	100

- Includes canopy, adjustable strap, and flat head slotted machine screw.
- White color blends with most installations.
- Adjust to fit 3" & 4" outlet boxes.
- Can be used for temporary or permanent applications.



For More Information, Call 1-800-345-2069