

Metal Products Company

(541) 747-6435 ~ 1 (800) 345-2069 ~ Fax: (541) 747-6641
1652 N. 32nd ~ P.O. Box 703 ~ Springfield, Oregon 97477

www.metalproducts.com



HVAC Products

Here at Metal Products Company, we are continuing to explore and grow our product line available to the HVAC industry. By engineering new product designs and enhancing our current offerings, our company goal is to become an industry leader in the manufacturing of HVAC duct and pipe supports, safety plates and strapping. We truly believe that we offer the highest quality square and round duct supports in the industry.

Our HVAC installation and duct support products are designed to save the contractor time and money. With quality duct support components made right here in the U.S.A., you will be assured that you are receiving a quality part at a competitive price.

Index

| Product: | Page(s): | Product: | Page(s): |
|-----------------------------------|-----------------|---|-----------------|
| Telescoping Ducts Hangers | 2-3 | Self-Nailing FHA Plates/ Stud Guards | 8 |
| Wedge Duct Hanger | 3 | Boca Plates | 9 |
| Self-Nailing Round Duct Hanger | 3 | Two Hole Pipe Straps | 10 |
| Mini Square Duct Hanger | 3 | One Hole Pipe Straps | 11 |
| Square Duct Hanger | 4 | J-Hooks | 12 |
| Strap Duct Hanger | 4 | J-Nails | 12 |
| Hanger Strap | 4 | Wire Pipe Hooks | 13 |
| Plumbers Tape | 5 | DWV Hangers | 14 |
| Duct Saddles | 5 | Vent Pipe Hangers | 14 |
| Duct Strap Buckle | 5 | CTS J-Hooks | 15 |
| Clevis Hangers | 6 | DWV J-Hooks | 15 |
| Swivel Hangers | 6 | Swivel PVC Hangers | 15 |
| Plate Straps | 7 | Grill Mounting Clip | 16 |
| Frisco Plate Straps | 8 | Furnace Leg | 16 |
| | | Fire Stop | 16 |
| | | Flex Collar | 16 |

Metal Products Company

(541) 747-6435 ~ 1 (800) 345-2069 ~ Fax: (541) 747-6641
 1652 N. 32nd ~ P.O. Box 703 ~ Springfield, Oregon 97477



www.metalproducts.com

Telescoping Duct Hangers

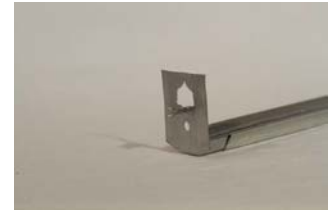
Pro Pounder, Heavy Duty Tip Self-Nailing

| Catalog # | Description | Case Qty. | Case Weight |
|-------------------|-------------|-----------|-------------|
| Regular | | | |
| YHNGR-PRO | 11" - 19" | 50 | 9.65 |
| Extra Long | | | |
| YHNGR-PRO-L-25 | 18" - 33" | 25 | 7.65 |
| YHNGR-PRO-L | 18" - 33" | 50 | 15.10 |



Pounder, Standard Duty Tip Self-Nailing

| Catalog # | Description | Case Qty. | Case Weight |
|-------------------|-------------|-----------|-------------|
| Regular | | | |
| YHNGR-PNDR | 11" - 19" | 50 | 9.65 |
| Extra Long | | | |
| YHNGR-PNDR-L-25 | 18" - 33" | 25 | 7.65 |
| YHNGR-PNDR-L | 18" - 33" | 50 | 15.10 |



Tabbed Bracket, use when tabbed bracket is preferred over self-nailing

| Catalog # | Description | Case Qty. | Case Weight |
|-------------------|-------------|-----------|-------------|
| Regular | | | |
| YHNGR-TAB | 11" - 19" | 50 | 9.65 |
| Extra Long | | | |
| YHNGR-TAB-L-25 | 18" - 33" | 25 | 7.65 |
| YHNGR-TAB-L | 18" - 33" | 50 | 15.10 |



For More Information, Call 1-800-345-2069

Metal Products Company

(541) 747-6435 ~ 1 (800) 345-2069 ~ Fax: (541) 747-6641
 1652 N. 32nd ~ P.O. Box 703 ~ Springfield, Oregon 97477



www.metalproducts.com

Telescoping Duct Hangers, cont.

Tabbed Bracket with pre-loaded screw

| Catalog # | Description | Case Qty. | Case Weight |
|-------------------|-------------|-----------|-------------|
| Regular | | | |
| YHNGR-SCRW | 11" - 19" | 50 | 9.65 |
| Extra Long | | | |
| YHNGR-SCRW-L-25 | 18" - 33" | 25 | 7.65 |
| YHNGR-SCRW-L | 18" - 33" | 50 | 15.10 |



Duct Hangers

Wedge Duct Hanger

| Catalog # | Description | GA | Case Qty. | Case Weight |
|---|-------------|----|-----------|-------------|
| Supports round flexible or rigid ducting between floor joists. | | | | |
| YWDG-1623 | 23-3/4" | 16 | 25 | 8.50 |
| YWDG-2015 | 15-1/2" | 20 | 50 | 7.40 |



Self-Nailing Round Duct Hanger

| Catalog # | Description | GA | Case Qty. | Case Weight |
|--|------------------|----|-----------|-------------|
| For 5" or 6" round heating pipes installed perpendicular to floor joists. | | | | |
| RDH | 5" - 6" Diameter | 18 | 50 | 5.00 |



Mini Square Duct Hanger

| Catalog # | Description | GA | Case Qty. | Case Weight |
|---|----------------|----|-----------|-------------|
| "L" shape hanger with 1" gap indicator to aid in proper installation | | | | |
| YDH-MINI | 3" x 1" x 1/2" | 18 | 1,000 | 19.50 |



For More Info, Call 1-800-345-2069

Metal Products Company

(541) 747-6435 ~ 1 (800) 345-2069 ~ Fax (541) 747-6641
 1652 N. 32nd ~ P.O. Box 703 ~ Springfield, Oregon 97477



www.metalproducts.com

Duct Hangers, cont.

Square Duct Hangers

| Catalog # | Description | GA | Case Qty. | Case Weight |
|---|-------------|----|-----------|-------------|
| Supports square or rectangular, supply and return air ducts. | | | | |
| YSDH-8 | 3/4" x 8" | 18 | 100 | 10.00 |
| YSDH-9 | 3/4" x 9" | 18 | 100 | 11.00 |
| YSDH-10 | 3/4" x 10" | 18 | 100 | 12.00 |
| YSDH-11 | 3/4" x 11" | 18 | 100 | 13.00 |



Strap Duct Hanger

| Catalog # | Description | GA | Case Qty. | Case Weight |
|---|------------------|----|-----------|-------------|
| Self-Nailing, for use on square ducts installed perpendicular to floor joists. | | | | |
| SDH | 1/2" x 7" x 3/4" | 18 | 100 | 5.00 |



Strapping

Hanger Strap available with or without bolt holes.

| Catalog # | Description | GA | Case Qty. | Case Wt. |
|-----------|---------------|----|-----------|----------|
| HS80 | 1 1/2" x 80' | 28 | 80' | 6.00 |
| HS100 | 1 1/2" x 100' | 28 | 100' | 7.50 |
| HS80-26 | 1 1/2" x 80' | 26 | 80' | 7.60 |
| HS100-26 | 1 1/2" x 100' | 26 | 100' | 9.50 |
| 1HS100 | 1" x 100' | 28 | 100' | 5.50 |
| 1HS100-26 | 1" x 100' | 26 | 100' | 6.00 |
| 1HS100-24 | 1" x 100' | 24 | 100' | 7.40 |



For More Information, Call 1-800-345-2069

Metal Products Company

(541) 747-6435 ~ 1 (800) 345-2069 ~ Fax (541) 747-6641
 1652 N. 32nd ~ P.O. Box 703 ~ Springfield, Oregon 97477

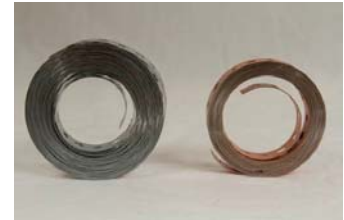


www.metalproducts.com

Strapping, cont.

Plumbers Tape

| Catalog # | Description | GA | Case Qty. Per Ft. | Case Wt. |
|--|--|----|----------------------|-------------|
| Galvanized with alternating nail and bolt holes. <i>All bolt holes available.</i> | | | | |
| PT28### | 3/4" Available in 10', 50', & 100' rolls | 28 | 1000' | 30 |
| PT26### | 3/4" Available in 10', 50', & 100' rolls | 26 | 1000' | 30 |
| PT24### | 3/4" Available in 10', 50', & 100' rolls | 26 | 1000' | 47 |
| PT22### | 3/4" Available in 10', 50', & 100' rolls | 28 | 1000' | 55 |
| PT20### | 3/4" Available in 10', 50', & 100' rolls | 26 | 1000' | 70 |
| Copper Clad with alternating nail and bolt holes. | | | | |
| PT24###-CC | 3/4" Available in 10', 50', & 100' rolls | 24 | 1000' | 47 |
| PT20###-CC | 3/4" Available in 10', 50', & 100' rolls | 20 | 1000' | 70 |
| Earthquake Strap | | | | |
| PT16010 | 7/8" Available in 10' strips only | 16 | 250' | 38 |



Duct Saddles for use with Hanger Strap.

| Catalog # | Description | GA | Case Qty. | Case Weight |
|-----------|--------------|----|-----------|-------------|
| DS20 | 5-1/2" x 20 | 30 | 25 | 13 |
| DS30 | 5-1/2" x 30" | 30 | 25 | 19 |



Duct Strap Buckle

| Catalog # | Description | GA | Case Qty. | Case Weight |
|--|-------------|----|-----------|-------------|
| Use with Hanger Strap, designed to fit standard threaded rod size 5/16" to 3/8". | | | | |
| DSB150 | 1-1/2" | 12 | 100 | 24 |



For More Info, Call 1-800-345-2069

Metal Products Company

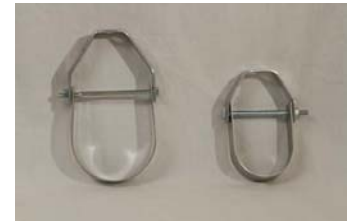
(541) 747-6435 ~ 1 (800) 345-2069 ~ Fax (541) 747-6641
 1652 N. 32nd ~ P.O. Box 703 ~ Springfield, Oregon 97477



www.metalproducts.com

Clevis Hangers

| Catalog # | Description | Rod Size | Case Qty. | Case Weight |
|-----------|-------------|----------|-----------|-------------|
| CH050 | 1/2" | 3/8" | 100 | 10 |
| CH075 | 3/4" | 3/8" | 100 | 11 |
| CH100 | 1" | 3/8" | 100 | 18 |
| CH125 | 1-1/4" | 3/8" | 100 | 21 |
| CH150 | 1-1/2" | 3/8" | 100 | 23 |
| CH200 | 2" | 3/8" | 50 | 30 |
| CH250 | 2-1/2" | 3/8" | 25 | 49 |
| CH300 | 3" | 3/8" | 25 | 57 |
| CH400 | 4" | 3/8" | 25 | 90 |



Swivel Hangers

| Catalog # | Description | Rod Size | Case Qty. | Case Weight |
|-----------|-------------|----------|-----------|-------------|
| SH050 | 1/2" | 3/8" | 100 | 11 |
| SH075 | 3/4" | 3/8" | 100 | 11 |
| SH100 | 1" | 3/8" | 100 | 12 |
| SH125 | 1-1/4" | 3/8" | 100 | 12 |
| SH150 | 1-1/2" | 3/8" | 100 | 13 |
| SH200 | 2" | 3/8" | 50 | 14 |



For More Information, Call 1-800-345-2069

Metal Products Company

(541) 747-6435 ~ 1 (800) 345-2069 ~ Fax (541) 747-6641
 1652 N. 32nd ~ P.O. Box 703 ~ Springfield, Oregon 97477

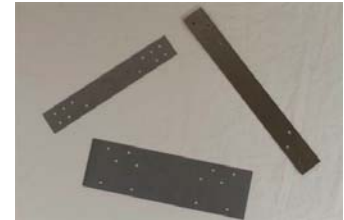


www.metalproducts.com

FHA Plates/Safety Plates

Plate Straps Available with 4, 6, or 8 holes on each end

| Catalog # | Description | GA | Case Qty. | Case Wt. |
|-------------------------|--------------|----|-----------|----------|
| 12 GAUGE | | | | |
| PS0612 | 1 1/2" x 6" | 12 | 100 | 20 |
| PS0912 | 1 1/2" x 9" | 12 | 50 | 14 |
| PS1212 | 1 1/2" x 12" | 12 | 50 | 28 |
| PS1812 | 1 1/2" x 18" | 12 | 50 | 42 |
| PS2412 | 1 1/2" x 24" | 12 | 50 | 42 |
| PS0612-3 | 3" x 6" | 12 | 100 | 32 |
| PS0912-3 | 3" x 9" | 12 | 25 | 14 |
| PS1212-3 | 3" x 12" | 12 | 25 | 20 |
| PS1812-3 | 3" x 18" | 12 | 25 | 28 |
| PS2412-3 | 3" x 24" | 12 | 25 | 40 |
| 16 GAUGE | | | | |
| PS0616 (1, 2 or 3 Hole) | 1 1/2" x 6" | 16 | 100 | 14 |
| PS0916 | 1 1/2" x 9" | 16 | 100 | 21 |
| PS1216 | 1 1/2" x 12" | 16 | 100 | 27 |
| PS1816 | 1 1/2" x 18" | 16 | 100 | 42 |
| PS2416 | 1 1/2" x 24" | 16 | 100 | 54 |
| PS3616 | 1 1/2" x 36" | 16 | 25 | 22 |
| PS0616-3 | 3" x 6" | 16 | 100 | 28 |
| PS0916-3 | 3" x 9" | 16 | 50 | 21 |
| PS1216-3 | 3" x 12" | 16 | 50 | 27 |
| PS1816-3 | 3" x 18" | 16 | 50 | 42 |
| PS2416-3 | 3" x 24" | 16 | 50 | 56 |
| PS3616-3 | 3" x 36" | 16 | 25 | 43 |
| 18 GAUGE | | | | |
| PS0318 | 1 1/2" x 3" | 18 | 100 | 5 |
| PS0618 | 1 1/2" x 6" | 18 | 100 | 11 |
| PS0918 | 1 1/2" x 9" | 18 | 100 | 16 |
| PS1218 | 1 1/2" x 12" | 18 | 100 | 21 |
| PS1818 | 1 1/2" x 18" | 18 | 100 | 32 |
| PS2418 | 1 1/2" x 24" | 18 | 100 | 42 |
| PS0618-3 | 3" x 6" | 18 | 100 | 24 |
| PS0918-3 | 3" x 9" | 18 | 50 | 24 |
| PS1218-3 | 3" x 12" | 18 | 50 | 20 |
| PS1818-3 | 3" x 18" | 18 | 50 | 30 |
| PS2418-3 | 3" x 24" | 18 | 50 | 40 |



For More Information, Call 1-800-345-2069

Metal Products Company

(541) 747-6435 ~ 1 (800) 345-2069 ~ Fax (541) 747-6641
 1652 N. 32nd ~ P.O. Box 703 ~ Springfield, Oregon 97477



www.metalproducts.com

FHA Plates/Safety Plates, cont.

Frisco Plate Straps Available with 6 or 8 holes on each end

| Catalog # | Description | GA | Case Qty. | Case Weight |
|-----------------|-------------|----|-----------|-------------|
| 16 Gauge | | | | |
| FPS0616-6 | 6" x 6" | 16 | 25 | 16 |
| FPS0916-6 | 6" x 9" | 16 | 25 | 24 |
| FPS1216-6 | 6" x 12" | 16 | 25 | 31 |
| FPS1816-6 | 6" x 18" | 16 | 25 | 47 |
| FPS2416-6 | 6" x 24" | 16 | 25 | 63 |



Self-Nailing FHA Plates/Stud Guards

| Catalog # | Description | GA | Case Qty. | Case Weight |
|-----------------|--------------|----|-----------|-------------|
| 16 Gauge | | | | |
| SP0916 | 1 1/2" x 9" | 16 | 100 | 21 |
| SP1216 | 1 1/2" x 12" | 16 | 100 | 27 |
| SP1816 | 1 1/2" x 18" | 16 | 100 | 42 |
| SP2416 | 1 1/2" x 24" | 16 | 100 | 54 |
| SP0916-3 | 3" x 9" | 16 | 50 | 21 |



For More Information, Call 1-800-345-2069

Metal Products Company

(541) 747-6435 ~ 1 (800) 345-2069 ~ Fax (541) 747-6641
 1652 N. 32nd ~ P.O. Box 703 ~ Springfield, Oregon 97477

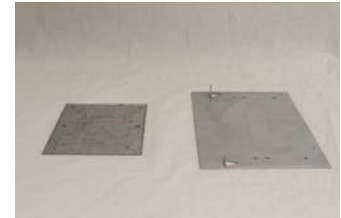


www.metalproducts.com

Boca Plates

Boca Plates many sizes available, contact us for more info.

| Catalog # | Description | Gauge | Case Qty. | Boxes per Pallet | Case Wt. |
|------------------------|-------------------------|-------|-----------|------------------|----------|
| PS0616-3.5-1 HOLE | 3-1/2" X 6" | 16 | 50 | 150 | 18 |
| PS0616-3.5-SN | 3-1/2" X 6" Self Nailer | 16 | 50 | 64 | 18 |
| PS816-3.5-SN | 3-1/2" X 8" Self Nailer | 16 | 50 | 64 | 24 |
| PS5416 | 5" X 4" | 16 | 50 | 150 | 17 |
| PS5416-SN | 5" X 4" Self Nailer | 16 | 50 | 112 | 17 |
| PS5516-SN | 5" X 5" Self Nailer | 16 | 50 | 64 | 21 |
| PS5816 | 5" X 8" | 16 | 50 | 60 | 35 |
| PS5816-SN | 5" X 8" Self Nailer | 16 | 50 | 64 | 35 |
| PS6816 | 6" X 8" | 16 | 50 | 32 | 40 |
| PS1216-6 (6 or 8 HOLE) | 6" X 12" | 16 | 25 | 84 | 30 |
| PS1816-3.5-2 HOLE | 3-1/2" X 18" | 16 | 25 | 80 | 28 |
| PS1816-5 (6 or 8 HOLE) | 5" X 18" | 16 | 25 | 56 | 41 |
| PS1816-6 (6 or 8 HOLE) | 6" X 18" | 16 | 25 | 56 | 47 |
| PS2416-6 (6 or 8 HOLE) | 6" X 24" | 16 | 25 | 45 | 62 |



For More Information, Call 1-800-345-2069

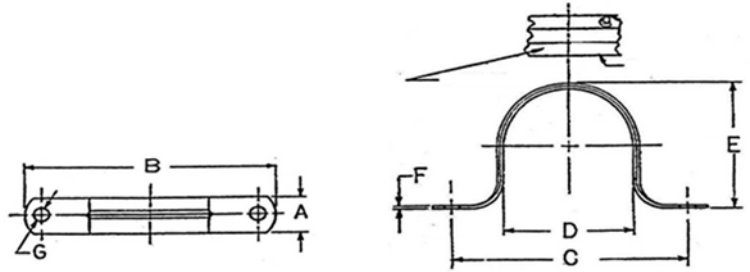
Metal Products Company

(541) 747-6435 ~ 1 (800) 345-2069 ~ Fax (541) 747-6641
 1652 N. 32nd ~ P.O. Box 703 ~ Springfield, Oregon 97477



www.metalproducts.com

Two Hole Pipe Straps



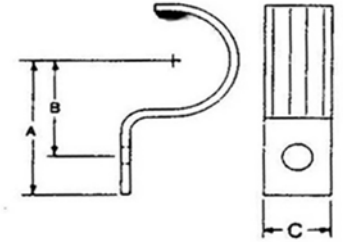
| Catalog # | Description | A | B | C | D | E | F | G | Case Quantity | Cases | Case Wt |
|---|-----------------------|-------|--------|-------|-------|-------|-------|-------|---------------|-------|---------|
| Galvanized | | | | | | | | | | | |
| For E.M.T. Thin Wall (Conduit) | | | | | | | | | | | |
| EMT050 | 1/2" EMT | 0.625 | 2.140 | 1.600 | 0.706 | 0.750 | 22 GA | 0.187 | 250 | 300 | 3.5 |
| EMT075 | 3/4" EMT | 0.625 | 2.288 | 1.715 | 0.922 | 1.015 | 22 GA | 0.187 | 200 | 300 | 3.3 |
| EMT100 | 1" EMT | 0.750 | 2.750 | 2.140 | 1.163 | 1.235 | 20 GA | 0.250 | 100 | 300 | 2.7 |
| EMT125 | 1 1/4" EMT | 0.750 | 3.520 | 2.750 | 1.510 | 1.540 | 20 GA | 0.250 | 50 | 300 | 1.8 |
| EMT150 | 1 1/2" EMT | 0.750 | 3.770 | 3.141 | 1.740 | 1.785 | 20 GA | 0.250 | 50 | 300 | 2.3 |
| EMT200 | 2" EMT | 0.750 | 4.453 | 3.812 | 2.147 | 2.270 | 20 GA | 0.250 | 25 | 300 | 1.5 |
| For RIGID Conduit and Plastic Pipe | | | | | | | | | | | |
| RPS025 | 1/4" RIGID | 0.625 | 1.875 | 1.385 | 0.480 | 0.540 | 22 GA | 0.187 | 250 | 300 | 4.4 |
| RPS038 | 3/8" RIGID | 0.625 | 2.270 | 1.660 | 0.630 | 0.700 | 22 GA | 0.187 | 250 | 300 | 5.6 |
| RPS050 | 1/2" RIGID | 0.625 | 2.270 | 1.765 | 0.840 | 0.870 | 22 GA | 0.187 | 250 | 300 | 6.0 |
| RPS075 | 3/4" RIGID | 0.625 | 2.355 | 1.850 | 1.050 | 1.130 | 22 GA | 0.187 | 150 | 300 | 1.9 |
| RPS100 | 1" RIGID | 0.750 | 2.940 | 2.315 | 1.315 | 1.370 | 20 GA | 0.250 | 100 | 160 | 4.7 |
| RPS125 | 1 1/4" RIGID | 0.750 | 3.672 | 2.925 | 1.660 | 1.725 | 20 GA | 0.250 | 50 | 300 | 2.9 |
| RPS150 | 1 1/2" RIGID | 0.750 | 3.922 | 3.165 | 1.890 | 1.940 | 20 GA | 0.250 | 50 | 300 | 3.2 |
| RPS200 | 2" RIGID | 0.750 | 5.015 | 4.188 | 2.375 | 2.410 | 18 GA | 0.270 | 25 | 300 | 2.5 |
| RPS200-H | 2" RIGID (Heavy Duty) | 1.000 | 5.040 | 4.250 | 2.335 | 2.410 | 18 GA | 0.270 | 25 | 300 | 2.7 |
| Not Snap On | | | | | | | | | | | |
| RPS250 | 2 1/2" RIGID | 1.000 | 5.720 | 4.688 | 2.875 | 3.050 | 16 GA | 0.312 | 25 | 160 | 4.0 |
| RPS300 | 3" RIGID | 1.000 | 6.578 | 5.515 | 3.500 | 3.670 | 16 GA | 0.312 | 20 | 160 | 3.9 |
| RPS350 | 3 1/2" RIGID | 1.000 | 7.156 | 6.125 | 4.000 | 3.975 | 16 GA | 0.312 | 15 | 160 | 3.3 |
| RPS400 | 4" RIGID | 1.000 | 7.718 | 6.718 | 4.500 | 4.700 | 16 GA | 0.312 | 10 | 160 | 2.4 |
| RPS600 | 6" RIGID | 1.000 | 10.250 | 9.250 | 6.715 | 6.775 | 16 GA | 0.312 | 20 | 160 | 6.3 |
| Copper | | | | | | | | | | | |
| For Rigid Copper Pipe | | | | | | | | | | | |
| CCPS025 | 1/4" RIGID | 0.500 | 1.635 | 1.100 | 0.380 | 0.410 | 24 GA | 0.187 | 500 | 300 | 2.5 |
| CCPS038 | 3/8" RIGID | 0.500 | 1.835 | 1.315 | 0.500 | 0.520 | 24 GA | 0.187 | 500 | 300 | 2.9 |
| CCPS050 | 1/2" RIGID | 0.500 | 1.775 | 1.270 | 0.645 | 0.630 | 24 GA | 0.187 | 250 | 300 | 1.5 |
| CCPS075 | 3/4" RIGID | 0.500 | 2.125 | 1.600 | 0.920 | 0.905 | 24 GA | 0.187 | 150 | 300 | 3.0 |
| CCPS100 | 1" RIGID | 0.750 | 2.895 | 2.185 | 1.140 | 1.145 | 22 GA | 0.187 | 100 | 300 | 2.7 |
| CCPS125 | 1 1/4" RIGID | 0.750 | 3.400 | 2.635 | 1.400 | 1.385 | 22 GA | 0.285 | 50 | 300 | 1.8 |
| CCPS150 | 1 1/2" RIGID | 0.750 | 4.160 | 3.105 | 1.675 | 1.640 | 22 GA | 0.285 | 50 | 300 | 2.3 |
| CCPS200 | 2" RIGID | 0.750 | 4.580 | 3.590 | 2.155 | 2.155 | 22 GA | 0.285 | 25 | 300 | 1.5 |

For More Information, Call 1-800-345-2069

Metal Products Company

(541) 747-6435 ~ 1 (800) 345-2069 ~ Fax (541) 747-6641
 1652 N. 32nd ~ P.O. Box 703 ~ Springfield, Oregon 97477

www.metalproducts.com



One Hole Pipe Straps

| Catalog # | Description | Dimension Chart | | | | Packaging Information | | |
|---|---------------|-----------------|-------|-------|-------|-----------------------|-----------|----------|
| | | A | B | C | Gauge | Inside Box | Case Qty. | Case Wt. |
| Galvanized | | | | | | | | |
| For E.M.T. Thin Wall | | | | | | | | |
| EOH038 | 3/8" BX Cable | 1.165 | 0.880 | 0.625 | 18 | 100 | 1,000 | 16 |
| EOH050 | 1/2" EMT | 1.360 | 0.985 | 0.625 | 16 | 100 | 1,000 | 25 |
| EOH075 | 3/4" EMT | 1.425 | 1.010 | 0.625 | 16 | 100 | 1,000 | 32 |
| EOH100 | 1" EMT | 1.545 | 1.290 | 0.750 | 14 | 50 | 500 | 27 |
| EOH125 | 1-1/4" EMT | 1.805 | 1.355 | 0.875 | 14 | 25 | 250 | 45 |
| EOH150 | 1-1/2" EMT | 2.440 | 1.814 | 0.875 | 13 | 25 | 250 | 66 |
| EOH200 | 2" EMT | 2.859 | 2.109 | 0.875 | 12 | 25 | 250 | 47 |
| For RIGID Conduit and Plastic Pipe | | | | | | | | |
| ROH050 | 1/2" RIGID | 1.281 | 0.890 | 0.570 | 14 | 100 | 1,000 | 35 |
| ROH075 | 3/4" RIGID | 1.406 | 1.015 | 0.570 | 14 | 100 | 1,000 | 43 |
| ROH100 | 1" RIGID | 1.562 | 1.156 | 0.570 | 14 | 50 | 500 | 30 |
| ROH125 | 1-1/4" RIGID | 1.318 | 1.114 | 0.875 | 12 | N/A | 25 | 2 |
| ROH150 | 1-1/2" RIGID | 1.710 | 1.600 | 0.875 | 12 | N/A | 25 | 2 |
| ROH200 | 2" RIGID | 2.056 | 1.542 | 0.875 | 12 | N/A | 25 | 3 |

For More Information, Call 1-800-345-2069

Metal Products Company

(541) 747-6435 ~ 1 (800) 345-2069 ~ Fax (541) 747-6641
 1652 N. 32nd ~ P.O. Box 703 ~ Springfield, Oregon 97477



www.metalproducts.com

J-Hooks

| Catalog # | Description | Gauge | Inside Box | Case Qty. | Case Wt. |
|------------------------------------|-------------------------|-------|------------|-----------|----------|
| Copper | | | | | |
| 12CCJN | 1/2" Copper | 12 | 100 | 1,000 | 17 |
| 34CCJN | 3/4" Copper | 12 | 100 | 1,000 | 21 |
| 1CCJN | 1" Copper | 12 | 100 | 1,000 | 27 |
| Copper with Plastic Coating | | | | | |
| 12CCJN-PL | 1/2" Copper w/plastic | 12 | 100 | 1,000 | 17 |
| 34CCJN-PL | 3/4" Copper w/plastic | 12 | 100 | 1,000 | 21 |
| 1CCJN-PL | 1" Copper w/plastic | 12 | 50 | 500 | 27 |
| 114CCJN-PL | 1-1/4" Copper w/plastic | 12 | 50 | 500 | 31 |
| Galvanized | | | | | |
| 12GAJN | 1/2" Galvanized | 12 | 100 | 1,000 | 17 |
| 34GAJN | 3/4" Galvanized | 12 | 100 | 1,000 | 21 |
| 1GAJN | 1" Galvanized | 12 | 100 | 1,000 | 27 |



J-Nails

| Catalog # | Description | Gauge | Inside Box | Case Qty. | Case Wt. |
|------------------------------------|-----------------------|-------|------------|-----------|----------|
| Copper | | | | | |
| 12CCWJN | 1/2" Copper | 8 | 100 | 1,000 | 17 |
| 34CCWJN | 3/4" Copper | 8 | 100 | 1,000 | 21 |
| Copper with Plastic Coating | | | | | |
| 12CCWJN-PL | 1/2" Copper w/plastic | 8 | 100 | 1,000 | 17 |
| 34CCWJN-PL | 3/4" Copper w/plastic | 8 | 100 | 1,000 | 21 |



For More Information, Call 1-800-345-2069

Metal Products Company

(541) 747-6435 ~ 1 (800) 345-2069 ~ Fax (541) 747-6641
 1652 N. 32nd ~ P.O. Box 703 ~ Springfield, Oregon 97477



www.metalproducts.com

Wire Pipe Hooks

| Catalog # | Description | Gauge | Inside Box | Case Qty. | Case Wt. |
|-----------------------|-------------|-------|------------|-----------|----------|
| Plain | | | | | |
| WPH1/2X4 | 1/2" x 4" | 12 | 50 | 1,000 | 30 |
| WPH1/2X6 | 1/2" x 6" | 12 | 50 | 1,000 | 45 |
| WPH3/4X4 | 3/4" x 4" | 12 | 50 | 1,000 | 30 |
| WPH3/4X6 | 3/4" x 6" | 12 | 50 | 1,000 | 45 |
| WPH1X6 | 1" x 6" | 12 | 50 | 1,000 | 45 |
| WPH1/2X4-10 | 1/2" x 4" | 10 | 50 | 1,000 | 35 |
| WPH1/2X6-10 | 1/2" x 6" | 10 | 50 | 1,000 | 50 |
| WPH3/4X4-10 | 3/4" x 4" | 10 | 50 | 1,000 | 35 |
| WPH3/4X6-10 | 3/4" x 6" | 10 | 50 | 1,000 | 50 |
| WPH1X6-10 | 1" x 6" | 10 | 50 | 1,000 | 50 |
| Copper Coated | | | | | |
| WPH1/2X4-CC | 1/2" x 4" | 12 | 50 | 1,000 | 30 |
| WPH1/2X6-CC | 1/2" x 6" | 12 | 50 | 1,000 | 45 |
| WPH3/4X4-CC | 3/4" x 4" | 12 | 50 | 1,000 | 30 |
| WPH3/4X6-CC | 3/4" x 6" | 12 | 50 | 1,000 | 45 |
| WPH1X6-CC | 1" x 6" | 12 | 50 | 1,000 | 45 |
| WPH1/2X4-CC-10 | 1/2" x 4" | 10 | 50 | 1,000 | 35 |
| WPH1/2X6-CC-10 | 1/2" x 6" | 10 | 50 | 1,000 | 50 |
| WPH3/4X4-CC-10 | 3/4" x 4" | 10 | 50 | 1,000 | 35 |
| WPH3/4X6-CC-10 | 3/4" x 6" | 10 | 50 | 1,000 | 50 |
| WPH1X6-CC-10 | 1" x 6" | 10 | 50 | 1,000 | 50 |
| Plastic Coated | | | | | |
| WPH1/2X4-PL | 1/2" x 4" | 12 | 50 | 1,000 | 30 |
| WPH1/2X6-PL | 1/2" x 6" | 12 | 50 | 1,000 | 45 |
| WPH3/4X4-PL | 3/4" x 4" | 12 | 50 | 1,000 | 30 |
| WPH3/4X6-PL | 3/4" x 6" | 12 | 50 | 1,000 | 45 |
| WPH1X6-PL | 1" x 6" | 12 | 50 | 1,000 | 45 |
| WPH1/2X4-PL-10 | 1/2" x 4" | 10 | 50 | 1,000 | 35 |
| WPH1/2X6-PL-10 | 1/2" x 6" | 10 | 50 | 1,000 | 50 |
| WPH3/4X4-PL-10 | 3/4" x 4" | 10 | 50 | 1,000 | 35 |
| WPH3/4X6-PL-10 | 3/4" x 6" | 10 | 50 | 1,000 | 50 |
| WPH1X6-PL-10 | 1" x 6" | 10 | 50 | 1,000 | 50 |



For More Information, Call 1-800-345-2069

Metal Products Company

(541) 747-6435 ~ 1 (800) 345-2069 ~ Fax (541) 747-6641
 1652 N. 32nd ~ P.O. Box 703 ~ Springfield, Oregon 97477



www.metalproducts.com

DWV Hangers includes locking screw

| Catalog # | Description | Gauge | Case Qty. | Case Wt. |
|---|-----------------------------------|-------|-----------|----------|
| Copper | | | | |
| DWV150 | 1-1/2" x 12" x 3/4" | 18 | 50 | 13 |
| DWV200 | 2" x 12" x 3/4" | 18 | 50 | 15 |
| DWV300 | 3" x 12" x 3/4" | 16 | 50 | 17 |
| DWV400 | 4" x 12" x 3/4" | 16 | 50 | 20 |
| Galvanized with Plastic Coating | | | | |
| DWV150-PL | 1-1/2" x 12" x 3/4" w/ plastic | 18 | 50 | 14 |
| DWV200-PL | 2" x 12" x 3/4" w/plastic | 18 | 50 | 16 |
| DWV300-PL | 3" x 12" x 3/4" w/plastic | 16 | 50 | 20 |
| DWV400-PL | 4" x 12" x 3/4" w/plastic | 16 | 50 | 25 |
| Heavy Duty Galvanized with Plastic Coating | | | | |
| DWV150-HD-PL | 1-1/2" x 12" x 1" w/ plastic | 18 | 50 | 15 |
| DWV200-HD-PL | 2" x 12" x 1" w/plastic | 18 | 50 | 17 |
| DWV300-HD-PL | 3" x 12" x 1" w/plastic | 16 | 50 | 25 |
| DWV400-HD-PL | 4" x 12" x 1" w/plastic | 16 | 50 | 32 |
| DWV600-HD-PL | 6" x 12" x 1" w/plastic | 16 | 25 | 25 |



Vent Pipe Hangers

| Catalog # | Description | GA | Case Qty. | Case Weight |
|-------------------|----------------------|----|-----------|-------------|
| Galvanized | | | | |
| VPH300 | 3" x 3-1/4" x 1-1/4" | 18 | 6 | 2 |
| VPH400 | 4" x 4" x 1-1/4" | 18 | 6 | 2 |
| VPH500 | 5" x 4-1/4" x 1-1/4" | 18 | 6 | 3 |
| VPH600 | 6" x 5" x 1-1/4" | 18 | 6 | 4 |
| VPH700 | 7" x 5-1/4" x 1-1/4" | 18 | 6 | 5 |
| VPH800 | 8" x 6" x 1-1/2" | 18 | 6 | 6 |



For More Information, Call 1-800-345-2069

Metal Products Company

(541) 747-6435 ~ 1 (800) 345-2069 ~ Fax (541) 747-6641
 1652 N. 32nd ~ P.O. Box 703 ~ Springfield, Oregon 97477



www.metalproducts.com

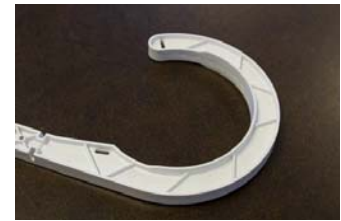
CTS J-Hook PVC Pipe Hangers

| Catalog # | Description | Case Qty. | Case Weight |
|-----------|-------------|-----------|-------------|
| Y20500 | 1/2" | 25 | 1 |
| Y20750 | 3/4" | 25 | 1 |
| Y20100 | 1" | 25 | 1 |
| Y20125 | 1-1/4" | 25 | 1.5 |



DWV J-Hook PVC Pipe Hangers

| Catalog # | Description | Case Qty. | Case Weight |
|-----------|-------------|-----------|-------------|
| Y20150 | 1-1/2" | 25 | 2 |
| Y20200 | 2" | 25 | 2.5 |
| Y20300 | 3" | 25 | 3 |
| Y20400 | 4" | 15 | 2.5 |



Swivel PVC Pipe Hangers

| Catalog # | Description | Case Qty. | Case Weight |
|-----------|-------------|-----------|-------------|
| YMH1500-9 | 1-1/2" | 25 | 3 |
| YMH2000-9 | 2" | 25 | 3 |
| YMH3000-9 | 3" | 25 | 3.5 |



For More Information, Call 1-800-345-2069

Metal Products Company

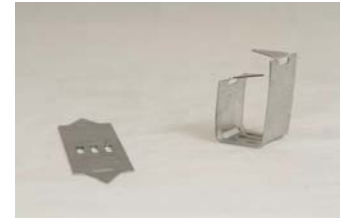
(541) 747-6435 ~ 1 (800) 345-2069 ~ Fax (541) 747-6641
 1652 N. 32nd ~ P.O. Box 703 ~ Springfield, Oregon 97477



www.metalproducts.com

Grill Mounting Clip for mounting grill work to duct board

| Catalog # | Description | Size | GA | Case Qty. | Case Wt. |
|-----------|-----------------------|------------|----|-----------|----------|
| GMC100 | 1" Galvanized | 1" | 24 | 100 | 24 |
| GMC200 | 1" thru 2" Galvanized | 1" thru 2" | 24 | 100 | 22 |



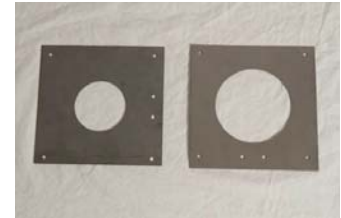
Furnace Leg mounts to each corner of furnace

| Catalog # | Description | Size | GA | Case Qty. | Case Wt. |
|-----------|---------------------------|------|----|-----------|----------|
| FUR-LEG | 1/2" x 1" x 6" Galvanized | 6" | 16 | 250 | 28 |



Fire Stops

| Catalog # | Description | Size | GA | Case Qty. | Case Wt. |
|-----------|------------------|---------|----|-----------|----------|
| FS100 | 1" Pipe Hole | 6" x 6" | 22 | 50 | 17 |
| FS150 | 1-1/2" Pipe Hole | 6" x 6" | 22 | 50 | 17 |
| FS200 | 2" Pipe Hole | 6" x 6" | 22 | 50 | 17 |
| FS300 | 3" Pipe Hole | 6" x 6" | 22 | 50 | 17 |
| FS400 | 4" Pipe Hole | 9" x 9" | 22 | 50 | 28 |



Flex Collars (Roof Jacks/Flashings) Galvanized base/neoprene collars

| Catalog # | Description | Size | GA | Case Qty. | Case Wt. |
|-----------|-------------|-------------|----|-----------|----------|
| YMF2 | 11" x 14" | 1 1/2" - 2" | 26 | 18 | 13.5 |
| YMF4 | 12" x 16" | 2 1/2" - 4" | 26 | 8 | 8 |



For More Information, Call 1-800-345-2069