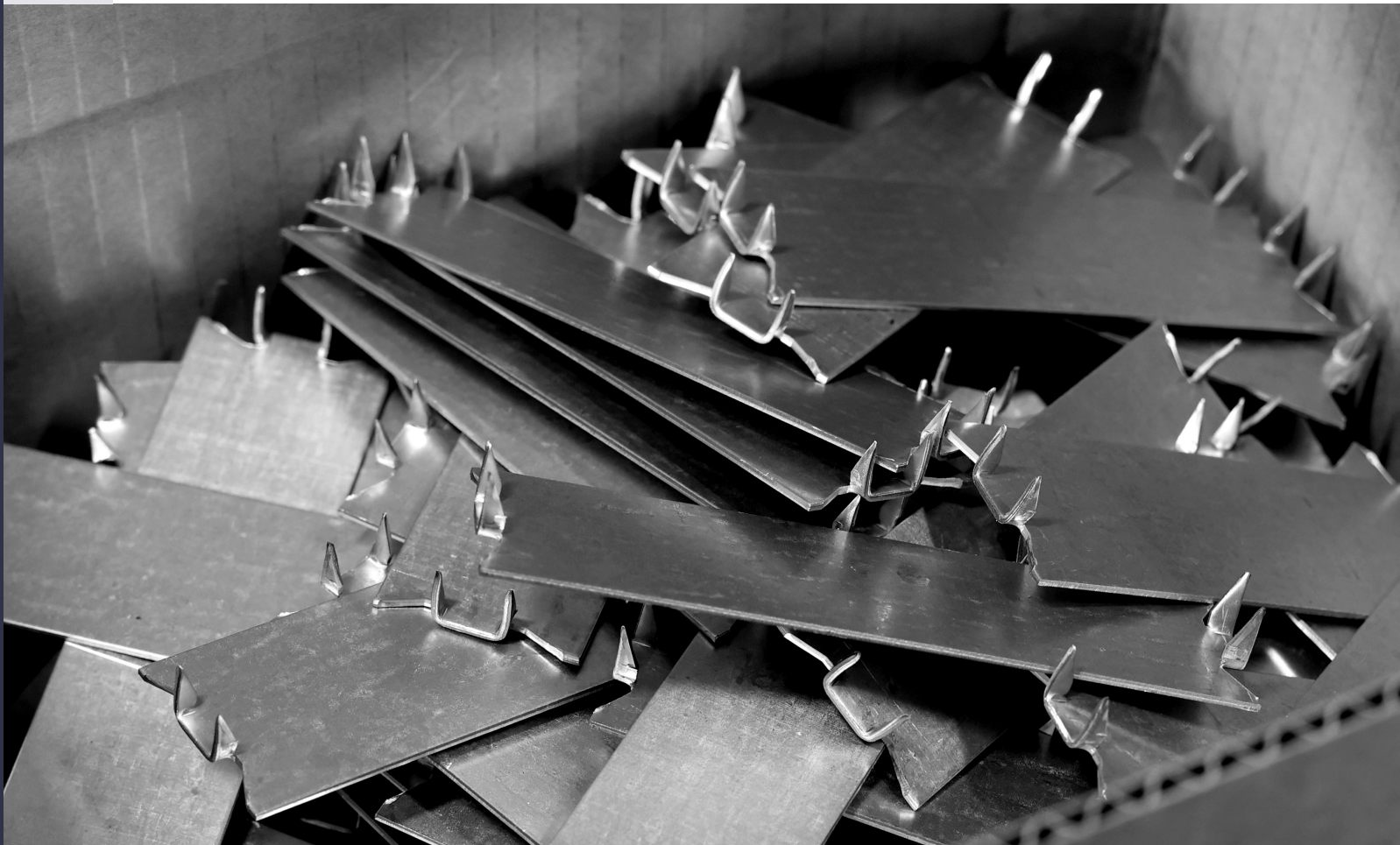


METAL
PRODUCTS
COMPANY

PRODUCT CATALOG



QUALITY METAL STAMPINGS FOR THE
BUILDING INDUSTRY AND BEYOND



ABOUT US

Metal Products Company is a metal stamping operation located in Springfield, Oregon and has been in business since 1977. We manufacture products for the plumbing, electrical and construction industries, strapping seals, and custom stamping work. Metal Products Company employs a large team of professionals in our two plants encompassing 80,000 square feet with two warehouses and five loading docks. We have 30 punch presses ranging from 10 ton to 110 ton capable of running material .004" to .25" thick and up to 26" wide.

Metal Products Company runs and maintains an in-house die shop complete with multiple Wire EDM and CNC machines. We design, build, and maintain our own tooling completely in-house.

CAPABILITIES & REACH

On top of our custom stamping and machining capabilities, we offer a complete packaging department capable of custom packaging your product with bagging, boxing, labeling and individual bar codes according to customer request. We private package and custom label for many companies, which allows us access to many channels of commerce, including major wholesalers' central distribution centers, OEM, and major home improvement retailers. We will be happy to provide names of such customers upon request.

Metal Products Company also maintains a network of Manufacturer's Representatives who market our products to plumbing wholesalers from ten warehouses coast to coast. Our steel purchasing capabilities and shipping volume allows us to be extremely competitive nationwide.



METAL PRODUCTS COMPANY

OUR PRODUCTS



06 SAFETY PLATES



10 PLATE STRAPS



14 FRISCO PLATE STRAPS



16 BOCA PLATES



18 STUD SHOES



19 PLUMBERS TAPE AND HANGER STRAPS



22 ONE & TWO HOLE PIPE STRAPS (EMT & RPS)



25 WIRE PIPE HOOKS



29 J-NAILS



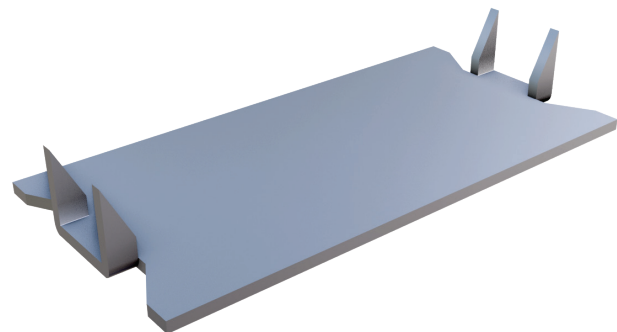
30 MISC. PLUMBING ACCESSORIES



36 MISC. HVAC ACCESSORIES

SAFETY PLATES

(Stud Guards, Nails Plates) Self-Nailing. Helps prevent damage from sheetrock nails.

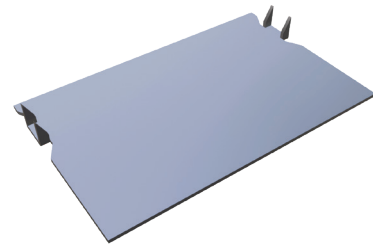


CATALOG NO.	DESCRIPTION	GA	CASE QTY.	CASE WT.	PALLET
SP314500	1 1/2" x 3"	14	500	42	24000
SP514100	1 1/2" x 5"	14	100	13	16000
SP316100	1 1/2" x 3"	16	100	7	30000
SP316200	1 1/2" x 3"	16	200	13	20000
SP316500	1 1/2" x 3"	16	500	33	24000
SP416100	1 1/2" x 4"	16	100	10	16000
SP516100	1 1/2" x 5"	16	100	11	12800
SP516250	1 1/2" x 5"	16	250	28	12000
SP616100	1 1/2" x 6"	16	100	15	12800
SP616250	1 1/2" x 6"	16	250	36	12000
GP316250-3	3 1/2" x 3" GANG PLATE	16	250	39	9000
SP516100-2	2" x 5"	16	100	15	12800
SP516100-3	3" x 5"	16	100	26	6400
SP616100-3	3" x 6"	16	100	28	6400
GP516200-3	5" x 3" GANG PLATE	16	200	47	7200
SP318100	1 1/2" x 3"	18	100	6	30000
SP518100	1 1/2" x 5"	18	100	10	16000
SP618100	1 1/2" x 6"	18	100	11	16000
SP518100-2	2" x 5"	18	100	9	12800
SP518100-3	3" x 5"	18	100	14	6400
SP620100	1 1/2" x 6"	20	100	8	12800



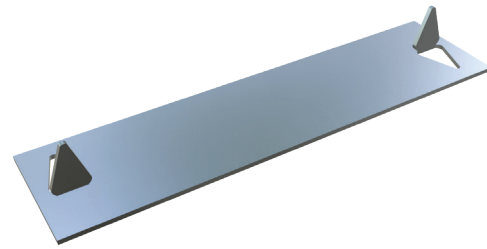
SAFETY PLATES OFF-SET

(Stud Guards, Nails Plates) Self-Nailing. Helps prevent damage from sheetrock nails.



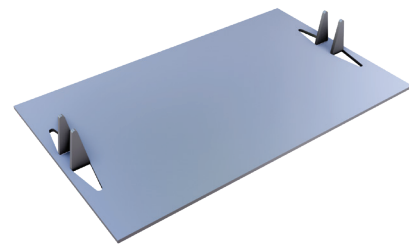
CATALOG NO.	DESCRIPTION	GA	CASE QTY.	CASE WT.	PALLET
SP316100-3-NOS	3" x 3" OFF SET	16	100	16	12800
SP516100-3-NOS	3" x 5" OFF SET	16	100	24	6400
SP616100-3-NOS	3" x 6" OFF SET	16	100	28	6400

INTERLOCKING SAFETY PLATES



CATALOG NO.	DESCRIPTION	GA	CASE QTY.	CASE WT.	PALLET
SP616100-IL	1 1/2" x 6"	16	100	15	12800

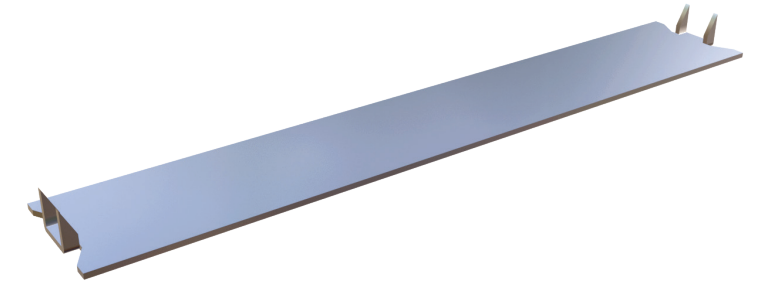
NAIL PLATES



CATALOG NO.	DESCRIPTION	GA	CASE QTY.	CASE WT.	PALLET
NP516100-2	2" x 5"	16	100	15	12800
NP516100-3	3" x 5"	16	100	24	6400

SELF-NAILING FHA PLATES/STUD GUARDS

No nails needed for faster installation.



CATALOG NO.	DESCRIPTION	GA	CASE QTY.	CASE WT.	PALLET
SP0916	1 1/2" x 9"	16	100	21	12800
SP1216	1 1/2" x 12"	16	50	14	4500
SP1816	1 1/2" x 18"	16	50	21	4000
SP2416	1 1/2" x 24"	16	50	27	4000
SP0916-3	3" x 9"	16	50	21	4000
SP0918	1 1/2" x 9"	18	100	16	12800
SP1218	1 1/2" x 12"	18	100	22	9600
SP1818	1 1/2" x 18"	18	100	33	8000
SP2418	1 1/2" x 24"	18	100	44	8000

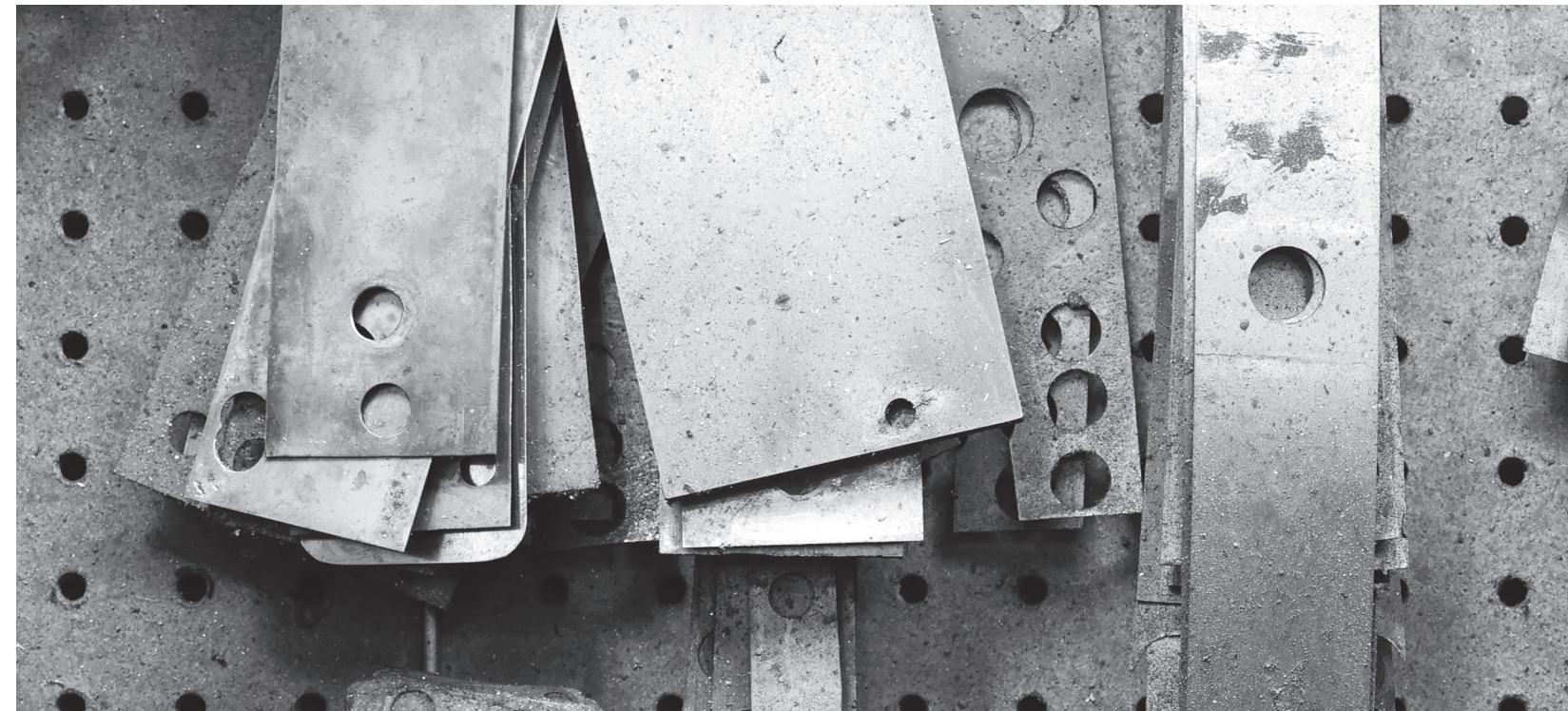
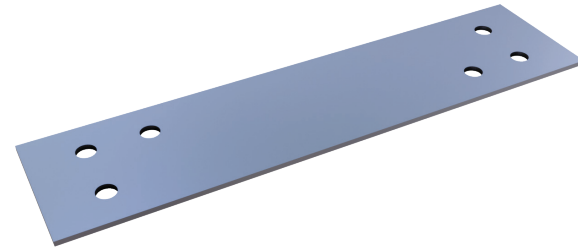


PLATE STRAPS (12 GA.)

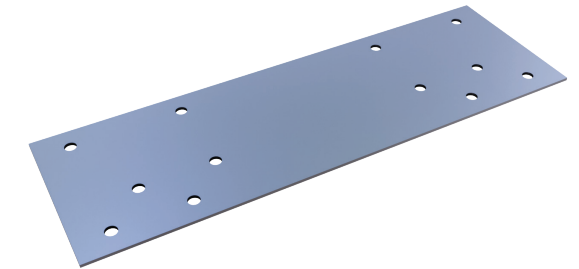
(Tie-Plates/FHA Plates) Available with 4, 6, or 8 holes on each end.



CATALOG NO.	DESCRIPTION	GA	QTY.	CASE WT.	PALLET
PS0612-2 HOLE	1 1/2" x 6" 2 HOLES EACH END	12	100	17	15000
PS0612-3 HOLE	1 1/2" x 6" 3 HOLES EACH END	12	100	17	15000
PS0612	1 1/2" x 6" 4 HOLES EACH END	12	100	17	15000
PS0912-3 HOLE	1 1/2" x 9" 3 HOLES EACH END	12	50	14	6000
PS0912	1 1/2" x 9" 4 HOLES EACH END	12	50	14	6000
PS1212	1 1/2" x 12" 4 HOLES EACH END	12	50	21	6000
PS1812	1 1/2" x 18" 4 HOLES EACH END	12	50	28	4000
PS2412	1 1/2" x 24" 4 HOLES EACH END	12	50	43	4000
PS0912-6 HOLE	1 1/2" x 9" 6 HOLES EACH END	12	50	14	6000
PS1212-6 HOLE	1 1/2" x 12" 6 HOLES EACH END	12	50	21	6000
PS1812-6 HOLE	1 1/2" x 18" 6 HOLES EACH END	12	50	28	4000
PS2412-6 HOLE	1 1/2" x 24" 6 HOLES EACH END	12	50	43	4000
PS1212-8 HOLE	1 1/2" x 12" 8 HOLES EACH END	12	50	21	6000
PS1812-8 HOLE	1 1/2" x 18" 8 HOLES EACH END	12	50	28	4000
PS2412-8 HOLE	1 1/2" x 24" 8 HOLES EACH END	12	50	43	4000
PS0612-3	3" x 6" 3 HOLES EACH END	12	100	32	9000
PS0912-3	3" x 9" 6 HOLES EACH END	12	25	14	3750
PS1212-3	3" x 12" 6 HOLES EACH END	12	25	20	3000
PS1812-3	3" x 18" 6 HOLES EACH END	12	25	28	2500
PS2412-3	3" x 24" 6 HOLES EACH END	12	25	40	2500

PLATE STRAPS (16 GA.)

(Tie-Plates/FHA Plates) Available with 4, 6, or 8 holes on each end.



CATALOG NO.	DESCRIPTION	GA	QTY.	CASE WT.	PALLET
PS0616-1 HOLE	1 1/2" x 6" 1 HOLE EACH END	16	100	14	15000
PS0616-2 HOLE	1 1/2" x 6" 2 HOLES EACH END	16	100	14	15000
PS0616-3 HOLE	1 1/2" x 6" 3 HOLES EACH END	16	100	14	15000
PS0916-1 HOLE	1 1/2" x 9" 1 HOLE EACH END	16	100	21	12000
PS0916-3 HOLE	1 1/2" x 9" 3 HOLES EACH END	16	100	21	12000
PS0916	1 1/2" x 9" 4 HOLES EACH END	16	100	21	12000
PS0916-6 HOLE	1 1/2" x 9" 6 HOLES EACH END	16	100	21	12000
PS0916-8 HOLE	1 1/2" x 9" 8 HOLES EACH END	16	100	21	12000
PS1216-2 HOLE	1 1/2" x 12" 2 HOLES EACH END	16	100	27	12000
PS1216	1 1/2" x 12" 4 HOLES EACH END	16	100	27	12000
PS1216-6 HOLE	1 1/2" x 12" 6 HOLES EACH END	16	100	27	12000
PS1216-8 HOLE	1 1/2" x 12" 8 HOLES EACH END	16	100	27	12000
PS1816-2 HOLE	1 1/2" x 18" 2 HOLES EACH END	16	100	42	8000
PS1816	1 1/2" x 18" 4 HOLES EACH END	16	100	42	8000
PS1816-6 HOLE	1 1/2" x 18" 6 HOLES EACH END	16	100	42	8000
PS1816-8 HOLE	1 1/2" x 18" 8 HOLES EACH END	16	100	42	8000
PS2416	1 1/2" x 24" 4 HOLES EACH END	16	100	63	8000
PS2416-6 HOLE	1 1/2" x 24" 6 HOLES EACH END	16	100	63	8000
PS2416- 8 HOLE	1 1/2" x 24" 8 HOLES EACH END	16	100	63	8000
PS2616-6 HOLE	1 1/2" x 26" 6 HOLES EACH END	16	100	63	8000
PS2616-8 HOLE	1 1/2" x 26" 8 HOLES EACH END	16	100	63	8000
PS3616	1 1/2" x 36" 4 HOLES EACH END	16	25	22	6000

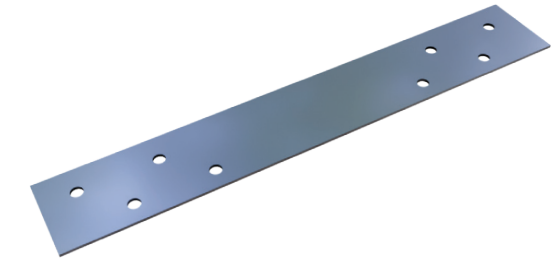
PLATE STRAPS (16 GA. CONTINUED)

(Tie-Plates/FHA Plates) Available with 4, 6, or 8 holes on each end.

CATALOG NO.	DESCRIPTION	GA	QTY.	CASE WT.	PALLET
PS3616-6 HOLE	1 1/2" x 36" 6 HOLES EACH END	16	25	22	6000
PS0616-3	3" x 6" 3 HOLES EACH END	16	100	28	15000
PS0916-3	3" x 9" 6 HOLES EACH END	16	50	23	6000
PS1216-3	3" x 12" 6 HOLES EACH END	16	50	31	6000
PS1216-3-8 HOLE	3" x 12" 8 HOLES EACH END	16	50	31	6000
PS1816-3	3" x 18" 6 HOLES EACH END	16	50	46	4000
PS1816-3-8 HOLE	3" x 18" 8 HOLES EACH END	16	50	46	4000
PS2416-3	3" x 24" 6 HOLES EACH END	16	50	61	4000
PS2416-3- 8 HOLE	3" x 24" 8 HOLES EACH END	16	50	61	4000
PS3616-3	3" x 36" SPECIAL	16	25	43	3200
PS0616-3.5	3 1/2" x 6" 4 HOLES EACH END	16	50	24	7500
PS816-3.5-SN	3 1/2" x 8" SELF-NAILER	16	50	24	6000
PS1816-3.5-2 HOLE	3 1/2" x 18" 2 HOLES EACH END	16	25	28	2500
PS1816-3.5-8 HOLE	3 1/2" x 18" 8 HOLES EACH END	16	25	28	2500
PS1216-8-1 HOLE	8" x 12" 1 HOLE EACH END	16	25	40	2500
PS1216-8-4 HOLE	8" x 12" 4 HOLES EACH END	16	25	40	2500
PS0916-10	10" x 9" 3 HOLES EACH END	16	25	40	3000
PS1216-10	10" x 12" 3 HOLES EACH END	16	25	50	1200
PS1816-10	10" x 18" 3 HOLES EACH END	16	10	31	400

PLATE STRAPS (18 GA.)

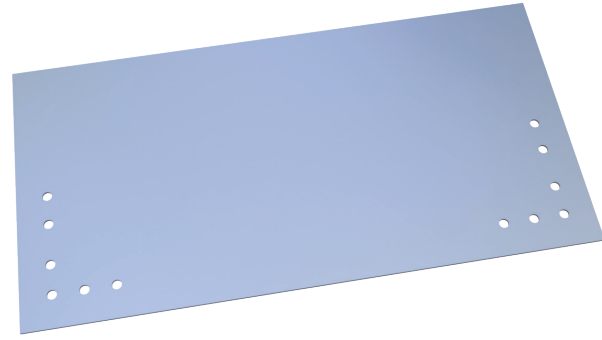
(Tie-Plates/FHA Plates) Available with 4, 6, or 8 holes on each end.



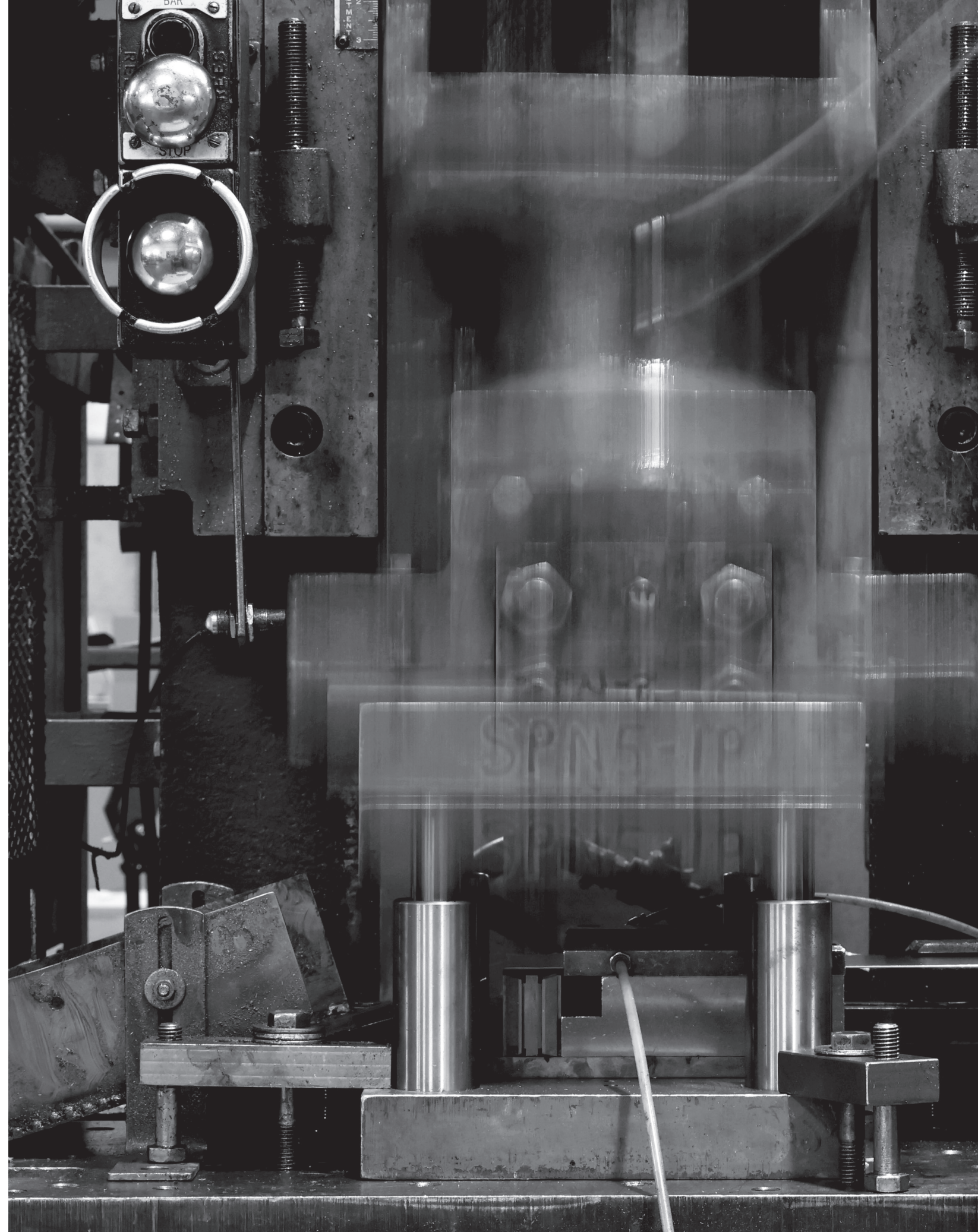
CATALOG NO.	DESCRIPTION	GA	QTY.	CASE WT.	PALLET
PS0318-1 HOLE	1 1/2" x 3" 1 HOLE EACH END	18	100	5	15000
PS0318	1 1/2" x 3" 3 HOLES EACH END	18	100	5	15000
PS0618-1 HOLE	1 1/2" x 6" 1 HOLE EACH END	18	100	13	15000
PS0618	1 1/2" x 6" 4 HOLES EACH END	18	100	13	15000
PS0918-3 HOLE	1 1/2" x 9" 3 HOLES EACH END	18	100	19	15000
PS0918	1 1/2" x 9" 4 HOLES EACH END	18	100	19	15000
PS0918-6 HOLE	1 1/2" x 9" 6 HOLES EACH END	18	100	19	15000
PS1218-3 HOLE	1 1/2" x 12" 3 HOLES EACH END	18	100	25	15000
PS1218	1 1/2" x 12" 4 HOLES EACH END	18	100	25	15000
PS1218-6 HOLE	1 1/2" x 12" 6 HOLES EACH END	18	100	25	15000
PS1818-3 HOLE	1 1/2" x 18" 3 HOLES EACH END	18	100	38	10000
PS1818	1 1/2" x 18" 4 HOLES EACH END	18	100	38	10000
PS1818-6 HOLE	1 1/2" x 18" 6 HOLES EACH END	18	100	38	10000
PS1818-8 HOLE	1 1/2" x 18" 8 HOLES EACH END	18	100	38	10000
PS2418-3 HOLE	1 1/2" x 24" 3 HOLES EACH END	18	100	51	8000
PS2418	1 1/2" x 24" 4 HOLES EACH END	18	100	51	8000
PS2418-6 HOLE	1 1/2" x 24" 6 HOLES EACH END	18	100	51	8000
PS0918-3	3" x 9" 6 HOLES EACH END	18	50	19	7500
PS1218-3	3" x 12" 6 HOLES EACH END	18	50	25	7500
PS1818-3-4 HOLE	3" x 18" 4 HOLES EACH END	18	50	38	5000
PS1818-3	3" x 18" 6 HOLES EACH END	18	50	38	5000
PS1818-3-8 HOLE	3" x 18" 8 HOLES EACH END	18	50	38	5000
PS2418-3	3" x 24" 6 HOLES EACH END	18	50	51	5000

FRISCO PLATE STRAPS

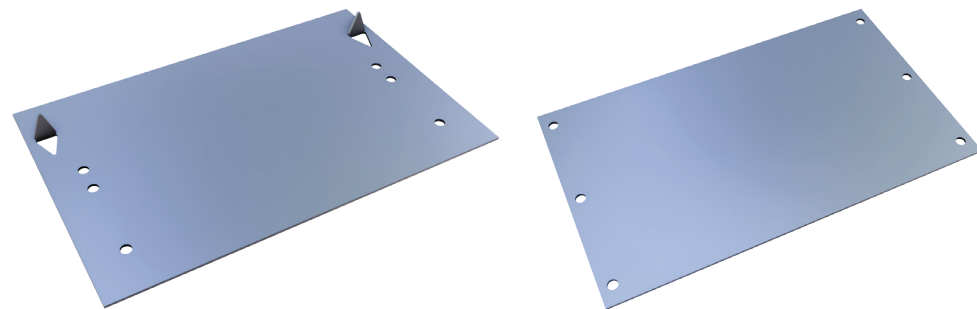
Available with 6 or 8 holes on each end.



CATALOG NO.	DESCRIPTION	GA	QTY.	CASE WT.	PALLET
FPS1816-3-8 HOLE	3" x 18" 8 HOLES EACH END	16	25	21	2000
FPS0616-6	6" x 6" 6 HOLES EACH END	16	25	16	3750
FPS0616-6-8 HOLE	6" x 6" 8 HOLES EACH END	16	25	16	3750
FPS0616-6-FEI	6" x 6" SPECIAL PATTERN	16	25	16	3750
FPS0616-6-FEI-TRI	6" x 6" SPECIAL PATTERN	16	25	16	3750
FPS0916-6	6" x 9" 6 HOLES EACH END	16	25	24	3000
FPS0916-6-8 HOLE	6" x 9" 8 HOLES EACH END	16	25	24	3000
FPS0916-6-FEI	6" x 9" SPECIAL PATTERN	16	25	24	3000
FPS0916-6-FEI-TRI	6" x 9" SPECIAL PATTERN	16	25	24	3000
FPS1216-6	6" x 12" 6 HOLES EACH END	16	25	31	2100
FPS1216-6-8 HOLE	6" x 12" 8 HOLES EACH END	16	25	31	2100
FPS1216-6-FEI	6" x 12" SPECIAL PATTERN	16	25	31	2100
FPS1216-6-FEI-TRI	6" x 12" SPECIAL PATTERN	16	25	31	2100
FPS1816-6	6" x 18" 6 HOLES EACH END	16	25	47	1400
FPS1816-6-8 HOLE	6" x 18" 8 HOLES EACH END	16	25	47	1400
FPS1816-6-FEI	6" x 18" SPECIAL PATTERN	16	25	47	1400
FPS1816-6-FEI-TRI	6" x 18" SPECIAL PATTERN	16	25	47	1400
FPS2416-6	6" x 24" 6 HOLES EACH END	16	25	63	1200
FPS2416-6-8 HOLE	6" x 24" 8 HOLES EACH END	16	25	63	1200
FPS2416-6-FEI-TRI	6" x 24" SPECIAL PATTERN	16	25	63	1200
FPS2416-6-FEI-TRI	6" x 24" SPECIAL PATTERN	16	25	63	1200



BOCA PLATES



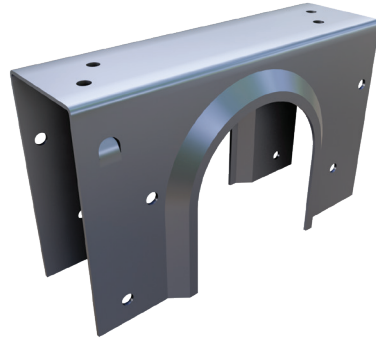
CATALOG NO.	DESCRIPTION	GA	CASE QTY.	CASE WT.	PALLET
PS0616-3.5-1 HOLE	3 1/2" x 6" 1 HOLE EACH END	16	50	18	7500
PS0616-3.5-SN	3 1/2" x 6" SELF NAILER NO HOLES	16	50	18	4000
PS816-3.5-SN	3 1/2" x 8" SELF NAILER NO HOLES	16	50	24	1600
PS5416	4" x 5" 3 HOLES EACH END	16	50	17	7500
PS5416-SN	4" x 5" SELF NAILER NO HOLES	16	50	17	4800
PS5516-SN	5" x 5" SELF NAILER NO HOLES	16	50	21	3200
PS5616-1 HOLE	5" x 6" 1 HOLE EACH END	16	50	26	3000
PS5616-SN	5" x 6" SELF NAILER NO HOLES	16	50	26	3200
PS5816-25	5" x 8" 3 HOLES EACH END	16	25	18	3000
PS5816	5" x 8" 3 HOLES EACH END	16	50	35	3000
PS5816-SN-25	5" x 8" SELF NAILER W/ 6 HOLES	16	25	18	2500
PS5816-SN	5" x 8" SELF NAILER W/ 6 HOLES	16	50	35	3200
PS5916-8 HOLE	5" x 9" 8 HOLES EACH END	16	50	39	3000
PS6816	6" x 8" SELF NAILER NO HOLES	16	50	40	1600
PS1216-5-6 HOLE	5" x 12" 6 HOLES EACH END	16	25	25	2100
PS1216-5-8 HOLE	5" x 12" 8 HOLES EACH END	16	25	25	2100
PS1216-5-16 HOLE	5" x 12" 16 HOLES EACH END	16	25	25	2100
PS1816-3.5-1 HOLE	3 1/2" x 18" 1 HOLE EACH END	16	25	28	2500
PS1816-3.5-2 HOLE	3 1/2" x 18" 2 HOLES EACH END	16	25	28	2500
PS1816-3.5-8 HOLE	3 1/2" x 18" 8 HOLES EACH END	16	25	28	2500

CATALOG NO.	DESCRIPTION	GA	QTY.	CASE WT.	PALLET
PS1816-5-6 HOLE	5" X 18" 6 HOLES EACH END	16	25	41	1400
PS1816-5-8 HOLE	5" X 18" 8 HOLES EACH END	16	25	41	1400
PS1816-5-16 HOLE	5" X 18" 16 HOLES EACH END	16	25	41	1400

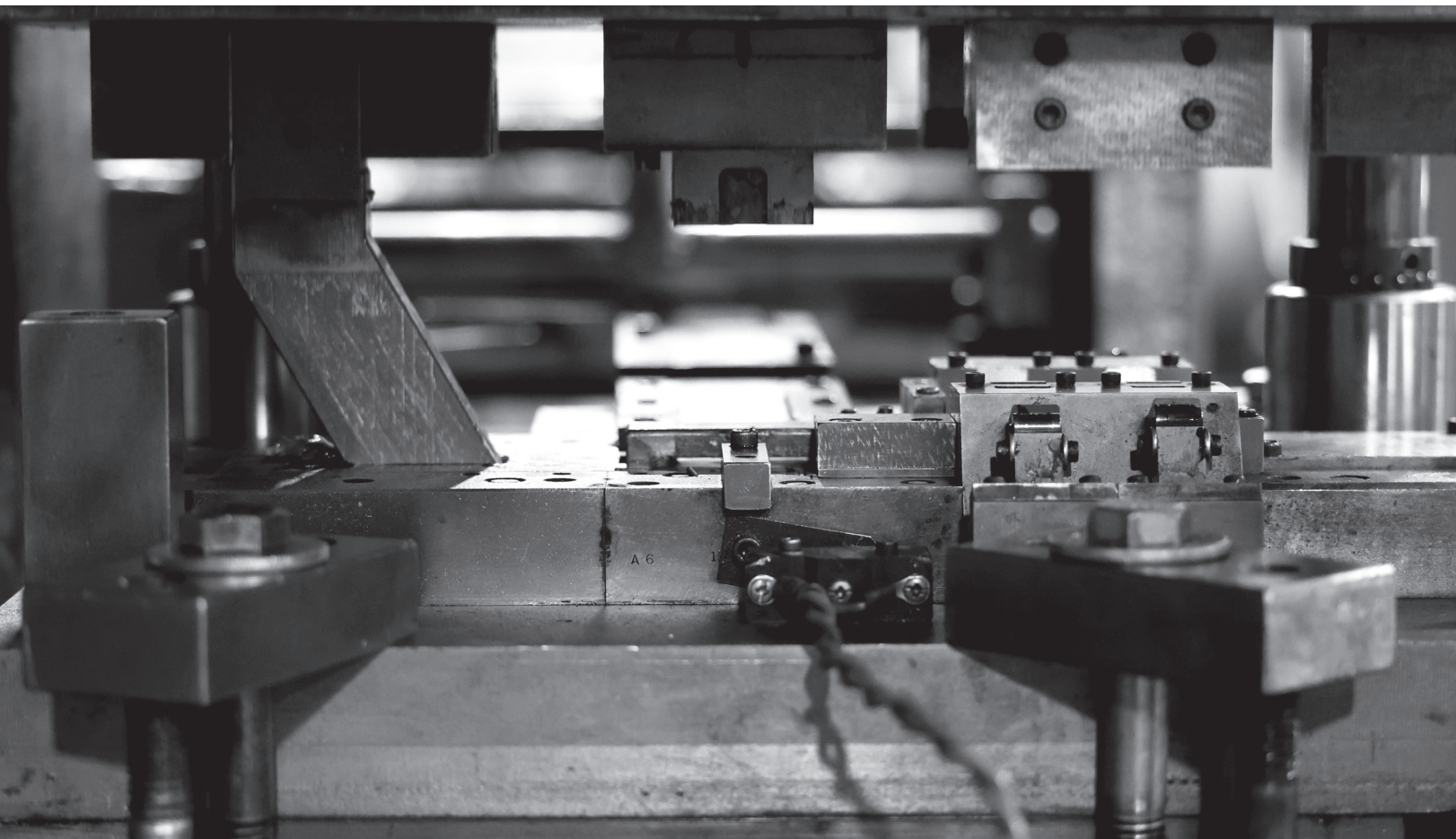


STUD SHOES

No nails needed for faster installation.

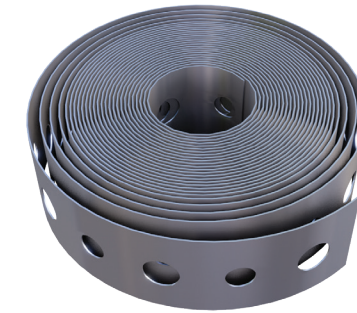


CATALOG NO.	DESCRIPTION	GA	CASE QTY.	CASE WT.	PALLET
SS2X6	2" x 6"	18	50	19	3000
SS4X6	4" x 6"	18	25	13	1500
SS6X6	6" x 6"	18	25	21	1500
SS2X6-16	2" x 6"	16	50	20	3000
SS4X6-16	4" x 6"	16	25	14	1500
SS6X6-16	6" x 6"	16	25	22	1500



PLUMBERS TAPE

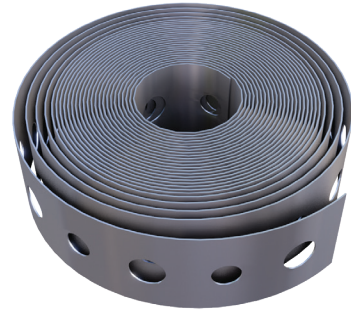
Alternating Bolt/Screw Size Holes. **Galvanized** with alternating nail and bolt holes, ordered by case. **Copper Clad** with alternating nail and bolt holes, ordered by roll. **Earthquake Strap** with bolt holes to secure water tanks to the wall, ordered by 10'.



CATALOG NO.	DESCRIPTION	GA	ROLLS PER CASE	ROLL WT.	CASE PALLET
PT28010	3/4" x 10' ROLL GALVANIZED	28	100	0.3	40
PT28050	3/4" x 50' ROLL GALVANIZED	28	20	1.5	54
PT28100	3/4" x 100' ROLL GALVANIZED	28	10	3	48
PT26010	3/4" x 10' ROLL GALVANIZED	26	100	0.3	40
PT26050	3/4" x 50' ROLL GALVANIZED	26	20	1.5	54
PT26100	3/4" x 100' ROLL GALVANIZED	26	10	3	48
PT24010	3/4" x 10' ROLL GALVANIZED	24	100	0.47	40
PT24050	3/4" x 50' ROLL GALVANIZED	24	20	2.35	54
PT24100	3/4" x 100' ROLL GALVANIZED	24	10	4.7	48
PT22010	3/4" x 10' ROLL GALVANIZED	22	100	0.55	40
PT22050	3/4" x 50' ROLL GALVANIZED	22	20	2.75	54
PT22100	3/4" x 100' ROLL GALVANIZED	22	10	5.5	48
PT20010	3/4" x 10' ROLL GALVANIZED	20	100	0.7	CALL
PT20050	3/4" x 50' ROLL GALVANIZED	20	20	3.5	CALL
PT20100	3/4" x 100' ROLL GALVANIZED	20	10	7	CALL
PT24010CC	3/4" x 10' ROLL COPPER CLAD	24	100	0.47	40
PT24050CC	3/4" x 50' ROLL COPPER CLAD	24	50	2.35	54
PT24100CC	3/4" x 100' ROLL COPPER CLAD	24	10	4.7	48
PT22010CC	3/4" x 10' ROLL COPPER CLAD	22	100	0.55	40
PT22050CC	3/4" x 50' ROLL COPPER CLAD	22	20	2.75	54
PT22100CC	3/4" x 100' ROLL COPPER CLAD	22	10	2.75	48
PT16010	7/8"-BUNDLE OF 25-10' EARTHQUAKE STRAP	16	250	1.5	CALL

PLUMBERS TAPE ALL BOLT HOLE

With all the same bolt hole size. All options are Galvanized with alternating nail and bolt holes, ordered by case.



CATALOG NO.	DESCRIPTION	GA	ROLLS PER CASE	ROLL WT.	CASE PALLET
PT28010BH	3/4" x 10' ROLL	28	100	0.3	40
PT28050BH	3/4" x 50' ROLL	28	20	1.5	54
PT28100BH	3/4" x 100' ROLL	28	10	3	48
PT26010BH	3/4" x 10' ROLL	26	100	0.3	40
PT26050BH	3/4" x 50' ROLL	26	20	1.5	54
PT26100BH	3/4" x 100' ROLL	26	10	3	48
PT24010BH	3/4" x 10' ROLL	24	100	0.47	40
PT24050BH	3/4" x 50' ROLL	24	20	2.35	54
PT24100BH	3/4" x 100' ROLL	24	10	4.7	48
PT22010BH	3/4" x 10' ROLL	22	100	0.55	40
PT22050BH	3/4" x 50' ROLL	22	20	2.75	54
PT22100BH	3/4" x 100' ROLL	22	10	5.5	48
PT20010BH	3/4" x 10' ROLL	20	100	0.7	CALL
PT20050BH	3/4" x 50' ROLL	20	20	3.5	CALL
PT20100BH	3/4" x 100' ROLL	20	10	7	CALL

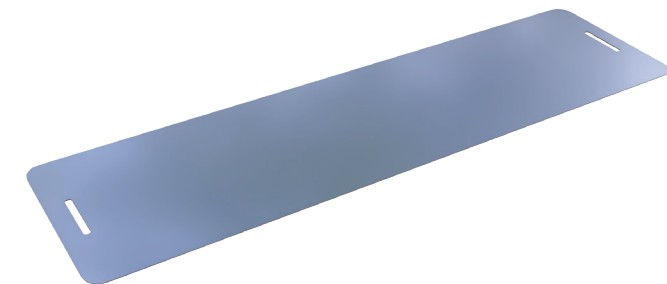
HANGER STRAPS

Available with or without holes.



CATALOG NO.	DESCRIPTION	GA	LENGTH	ROLL WT.	PALLET
HS100-30	1 1/2" x 100'	30	100'	6.0	250
HS80	1 1/2" x 80'	28	80'	6.0	250
HS80-1	1 1/2" x 80' WITH HOLES	28	80'	6.0	250
HS100	1 1/2" x 100'	28	100'	7.5	250
HS100-1	1 1/2" x 100' WITH HOLES	28	100'	7.5	250
HS80-26	1 1/2" x 80'	26	80'	7.6	250
HS80-1-26	1 1/2" x 80' WITH HOLES	26	80'	7.6	250
HS100-26	1 1/2" x 100'	26	100'	9.5	250
HS100-1-26	1 1/2" x 100' WITH HOLES	26	100'	9.5	250
1HS100-30	1" x 100'	30	100'	4.8	300
1HS100-26	1" x 100'	26	100'	6.0	300

DUCT SADDLES

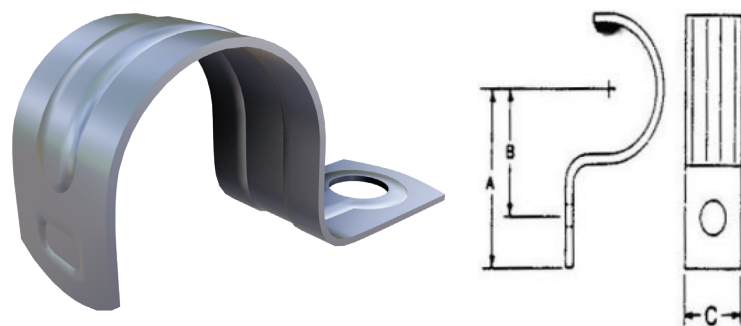


CATALOG NO.	DESCRIPTION	GA	CASE QTY.	CASE WT.	PALLET
DS20	5-1/2" X 20"	30	25	13	2500
DS30	5-1/2" X 30"	30	25	19	2500

ONE HOLE PIPE STRAPS

Galvanized.
EOH038 - EOH200: For E.M.T. Thin Wall.
ROH050 - ROH200: For RIGID Conduit and Plastic Pipe.

If needing smaller case quantities for items with over 100 parts per case, signify item code with "100" at the end of the part number. i.e. EOH038100.

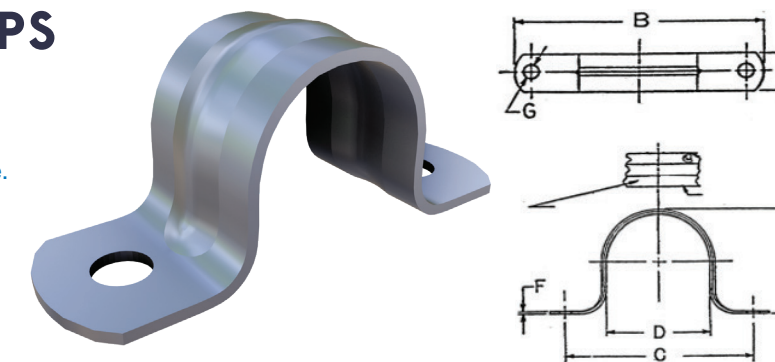


		DIMENSION CHART							
CATALOG NO.	DESCRIPTION	A	B	C	GA	CASE	WT.	PALLET	
EOH038	3/8" BX	1.165	0.880	0.625	18	500	8	90000	
EOH050	1/2" EMT	1.360	0.985	0.625	18	500	12.5	48000	
EOH075	3/4" EMT	1.425	1.010	0.625	16	100	3	18000	
EOH100	1" EMT	1.545	1.290	0.750	14	100	5.4	18000	
EOH125	1-1/4" EMT	1.805	1.355	0.875	14	100	9	9600	
EOH150	1-1/2" EMT	2.440	1.814	0.875	13	50	7	9000	
EOH200	2" EMT	2.859	2.109	0.875	12	25	4.75	4500	
ROH050	1/2" RIGID	1.281	0.890	0.570	14	500	17.5	48000	
ROH075	3/4" RIGID	1.406	1.015	0.570	14	100	4.25	18000	
ROH100	1" RIGID	1.562	1.156	0.570	14	100	6	18000	
ROH125	1-1/4" RIGID	1.318	1.114	0.875	12	100	8.5	9600	
ROH150	1-1/2" RIGID	1.710	1.600	0.875	12	50	5.3	9000	
ROH200	2" RIGID	2.056	1.542	0.875	12	25	4.25	3750	

TWO HOLE PIPE STRAPS (GALVANIZED)

EMT050 - EMT200: For E.M.T. Thin Wall (Conduit).
RPS025 - RPS200: For RIGID Conduit and Plastic Pipe.
RPS250 - RPS600: Not Snap On.

If needing smaller case quantities for items with over 100 parts per case, signify item code with "100" at the end of the part number. i.e. EMT050100.

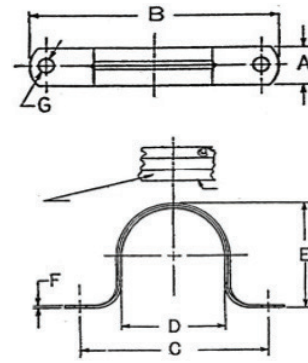
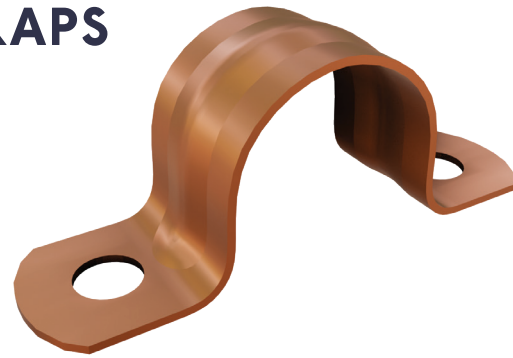


		DIMENSION CHART									
NO.	DESCRIPTION	A	B	C	D	E	F	G	CASE	WT.	PALLET
EMT050	1/2" EMT	0.625	2.140	1.600	0.706	0.750	22	0.187	250	3.5	45000
EMT075	3/4" EMT	0.625	2.288	1.715	0.922	1.015	22	0.187	100	3.3	56000
EMT100	1" EMT	0.750	2.750	2.140	1.163	1.235	20	0.250	100	2.7	18000
EMT125	1 1/4" EMT	0.750	3.520	2.750	1.510	1.540	20	0.250	50	1.8	9000
EMT150	1 1/2" EMT	0.750	3.770	3.141	1.740	1.785	20	0.250	50	2.3	9000
EMT200	2" EMT	0.750	4.453	3.812	2.147	2.270	20	0.250	25	1.5	4500
RPS025	1/4" RIGID	0.625	1.875	1.385	0.480	0.540	22	0.187	250	4.4	CALL
RPS038	3/8" RIGID	0.625	2.270	1.660	0.630	0.700	22	0.187	250	5.6	CALL
RPS050	1/2" RIGID	0.625	2.270	1.765	0.840	0.870	22	0.187	250	6.0	40000
RPS075	3/4" RIGID	0.625	2.355	1.850	1.050	1.130	22	0.187	100	4.1	30000
RPS100	1" RIGID	0.750	2.940	2.315	1.315	1.370	20	0.250	100	4.7	16000
RPS125	1 1/4" RIGID	0.750	3.672	2.925	1.660	1.725	20	0.250	50	2.9	15000
RPS150	1 1/2" RIGID	0.750	3.922	3.165	1.890	1.940	20	0.250	50	3.2	15000
RPS200	2" RIGID	0.750	5.015	4.188	2.375	2.410	18	0.270	25	2.5	7500
RPS250	2 1/2" RIGID	1.000	5.720	4.688	2.875	3.050	16	0.312	25	4.0	4000
RPS300	3" RIGID	1.000	6.578	5.515	3.500	3.670	16	0.312	20	3.9	3200
RPS350	3 1/2" RIGID	1.000	7.156	6.125	4.000	3.975	16	0.312	20	3.3	2400
RPS400	4" RIGID	1.000	7.718	6.718	4.500	4.700	16	0.312	20	2.4	1600
RPS500	5" RIGID	1.000	9.290	8.312	5.772	5.586	16	0.312	20	6.0	3200
RPS600	6" RIGID	1.000	10.250	9.250	6.715	6.775	16	0.312	20	6.3	2560
RPS800	8" RIGID	1.25	13.25	11.38	9	8.5	16	0.312	10	6	CALL

TWO HOLE PIPE STRAPS (COPPER CLAD)

For CTS Copper Tube.

If needing smaller case quantities for items with over 100 parts per case, signify item code with "100" at the end of the part number. i.e. CCPS050100.



		DIMENSION CHART									
NO.	DESCRIPTION	A	B	C	D	E	F	G	CASE	WT.	PALLET
CCPS025	1/4" CTS	0.500	1.635	1.100	0.380	0.410	24	0.187	500	2.5	CALL
CCPS038	3/8" CTS	0.500	1.835	1.315	0.500	0.520	24	0.187	500	2.9	CALL
CCPS050	1/2" CTS	0.500	1.775	1.270	0.645	0.630	24	0.187	250	1.5	37500
CCPS075	3/4" CTS	0.500	2.125	1.600	0.920	0.905	24	0.187	100	3.0	15000
CCPS100	1" CTS	0.750	2.895	2.185	1.140	1.145	22	0.187	100	2.7	15000
CCPS125	1 1/4" CTS	0.750	3.400	2.635	1.400	1.385	22	0.285	50	1.8	7500
CCPS150	1 1/2" CTS	0.750	4.160	3.105	1.675	1.640	22	0.285	50	2.3	7500
CCPS200	2" CTS	0.750	4.580	3.590	2.155	2.155	22	0.285	25	1.5	3750

WIRE PIPE HOOKS (PLAIN)



CATALOG NO.	DESCRIPTION	GA	BOX	CASE	WEIGHT	PALLET
WPH1/2X4	1/2" x 4"	12	50	1,000	26	CALL
WPH1/2X6	1/2" x 6"	12	50	1,000	36	15,000
WPH3/4X4	3/4" x 4"	12	50	1,000	26	12,000
WPH3/4X6	3/4" x 6"	12	50	1,000	36	12,000
WPH1X6	1" x 6"	12	50	1,000	36	CALL
WPH1/2X4-10	1/2" x 4"	10	50	1,000	34	CALL
WPH1/2X6-10	1/2" x 6"	10	50	1,000	47	15,000
WPH3/4X4-10	3/4" x 4"	10	50	1,000	34	12,000
WPH3/4X6-10	3/4" x 6"	10	50	1,000	47	12,000
WPH1X6-10	1" x 6"	10	50	1,000	47	CALL



WIRE PIPE HOOKS (COPPER COATED)



CATALOG NO.	DESCRIPTION	GA	BOX	CASE	WEIGHT	PALLET
WPH1/2X4--CC	1/2" x 4"	12	50	1,000	26	CALL
WPH1/2X6-CC	1/2" x 6"	12	50	1,000	36	15,000
WPH3/4X4-CC	3/4" x 4"	12	50	1,000	26	12,000
WPH3/4X6-CC	3/4" x 6"	12	50	1,000	36	CALL
WPH1X6-CC	1" x 6"	12	50	1,000	36	CALL
WPH1/2X4-CC-10	1/2" x 4"	10	50	1,000	34	CALL
WPH1/2X6-CC-10	1/2" x 6"	10	50	1,000	47	15,000
WPH3/4X4-CC-10	3/4" x 4"	10	50	1,000	34	12,000
WPH3/4X6-CC-10	3/4" x 6"	10	50	1,000	47	CALL
WPH1X6-CC-10	1" x 6"	10	50	1,000	47	CALL

WIRE PIPE HOOKS (PLASTIC COATED)



CATALOG NO.	DESCRIPTION	GA	BOX	CASE	WEIGHT	PALLET
WPH1/2X4-PL	1/2" x 4"	12	50	1,000	26	CALL
WPH1/2X6-PL	1/2" x 6"	12	50	1,000	36	15,000
WPH3/4X4-PL	3/4" x 4"	12	50	1,000	26	12,000
WPH3/4X6-PL	3/4" x 6"	12	50	1,000	36	CALL
WPH1X6-PL	1" x 6"	12	50	1,000	36	CALL
WPH1/2X4-PL-10	1/2" x 4"	10	50	1,000	34	CALL
WPH1/2X6-PL-10	1/2" x 6"	10	50	1,000	47	15,000
WPH3/4X4-PL-10	3/4" x 4"	10	50	1,000	34	12,000
WPH3/4X6-PL-10	3/4" x 6"	10	50	1,000	47	12,000
WPH1X6-PL-10	1" x 6"	10	50	1,000	47	CALL



WIRE PIPE HOOKS (COPPER/PLASTIC COATED)



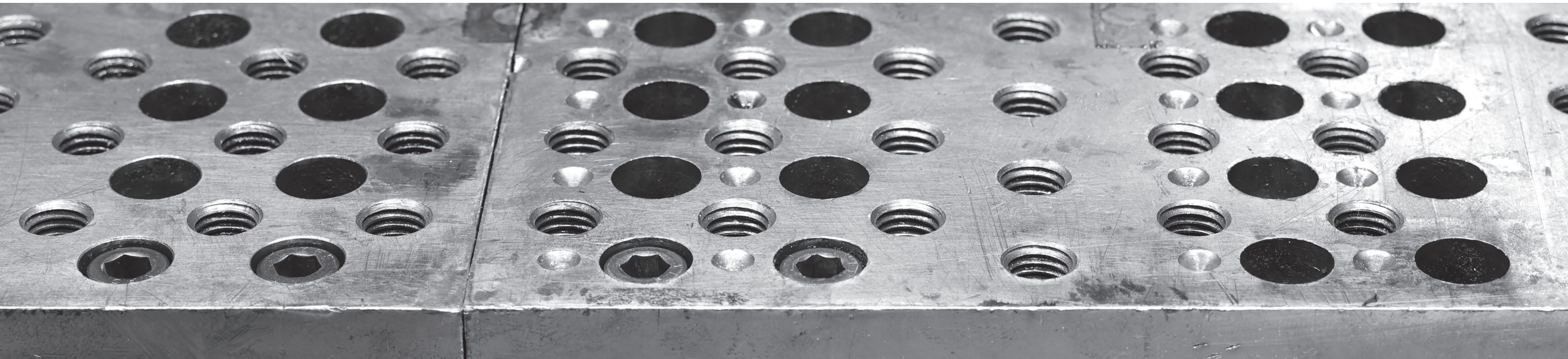
CATALOG NO.	DESCRIPTION	GA	BOX	CASE	WEIGHT
WPH1/2X4-CC-PL	1/2" x 4"	12	50	1,000	26
WPH1/2X6-CC-PL	1/2" x 6"	12	50	1,000	36
WPH3/4X4-CC-PL	3/4" x 4"	12	50	1,000	26
WPH3/4X6-CC-PL	3/4" x 6"	12	50	1,000	36
WPH1/2X4-CC-PL-10	1/2" x 4"	10	50	1,000	34
WPH1/2X6-CC-PL-10	1/2" x 6"	10	50	1,000	47
WPH3/4X4-CC-PL-10	3/4" x 4"	10	50	1,000	34
WPH3/4X6-CC-PL-10	3/4" x 6"	10	50	1,000	47
WPH1X6-CC-PL-10	1" x 6"	10	50	1,000	47

J-NAILS

Drive Straps, Nail Straps, J-Nails.



CATALOG NO.	DESCRIPTION	GA	BOX	CASE	WEIGHT	PALLET
34CCJN	3/4" COPPER	12	100	1,000	21	48000
1CCJN	1" COPPER	12	100	1,000	27	36000
34CCJN-PL	3/4" COPPER W/PLASTIC	12	100	1,000	21	CALL
1CCJN-PL	1" COPPER W/PLASTIC	12	50	500	27	CALL
34GAJN	3/4" GALVANIZED	12	100	1,000	21	36000
1GAJN	1" GALVANIZED	12	100	1,000	27	36000



DWV HANGERS

Includes locking screw.

DWV150 - DWV400: Galvanized.

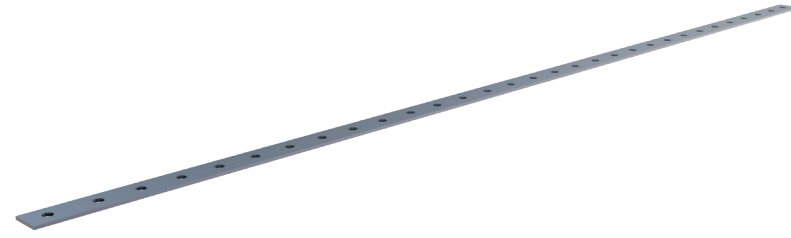
DWV150-PL - DWV400PL: Galvanized with Plastic Coating.



CATALOG NO.	DESCRIPTION	GA	CASE	WEIGHT
DWV150	1-1/2" x 12" x 3/4"	18	50	12
DWV200	2" x 12" x 3/4"	18	50	13
DWV300	3" x 12" x 3/4"	16	50	19
DWV400	4" x 12" x 3/4"	16	50	21
DWV150-PL	1-1/2" x 12" x 3/4" W/ PLASTIC	18	50	14
DWV200-PL	2" x 12" x 3/4" W/ PLASTIC	18	50	16
DWV300-PL	3" x 12" x 3/4" W/ PLASTIC	16	50	20
DWV400-PL	4" x 12" x 3/4" W/ PLASTIC	16	50	25

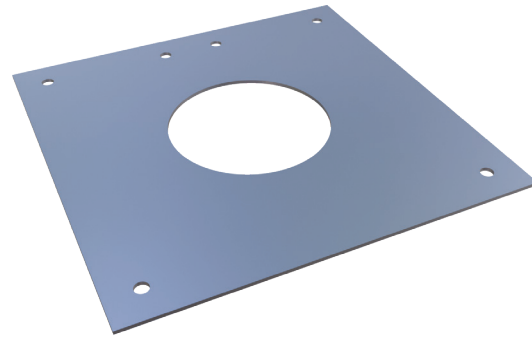


HOOK-ON STRAPS



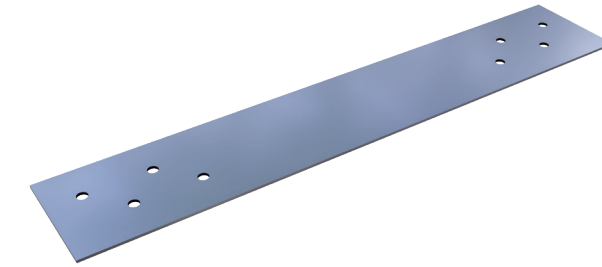
CATALOG NO.	DESCRIPTION	GA	CASE QTY.	CASE WT.	PALLET
HOS18	18"	14	100	18	15000
HOS26	26"	14	100	26	10000

FIRE STOPS



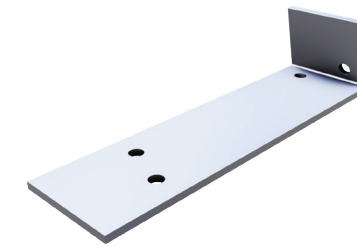
CATALOG NO.	DESCRIPTION	SIZE	GA	CASE QTY.	CASE WT.	PALLET
FS100	1" PIPE HOLE	6" x 6"	22	50	25	3750
FS150	1-1/2" PIPE HOLE	6" x 6"	22	50	25	3750
FS200	2" PIPE HOLE	6" x 6"	22	50	25	3750
FS300	3" PIPE HOLE	6" x 6"	22	50	25	3750
FS400	4" PIPE HOLE	9" x 9"	22	50	55	3750

CODE STRAP



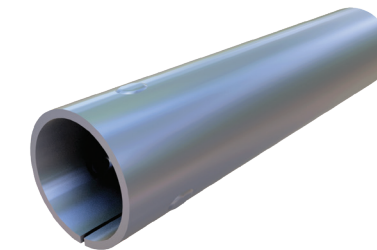
CATALOG NO.	DESCRIPTION	SIZE	GA	CASE QTY.	CASE WT.
CS14	WRAP AROUND	1 1/2" x 12"	14	100	50

TUB HANGER



CATALOG NO.	DESCRIPTION	GA	CASE QTY.	CASE WT.
TH12	1 1/2" x 6"	16	100	26

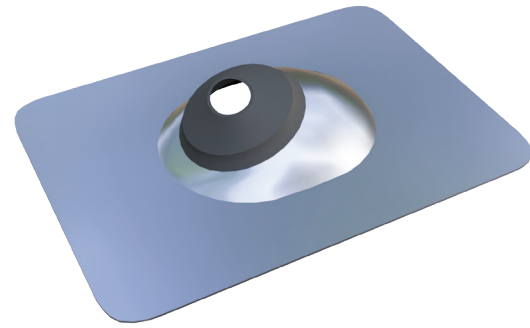
SAFETY SLEEVES



CATALOG NO.	DESCRIPTION	GA	CASE QTY.	CASE WT.	PALLET
SS-15	1 1/2"	16	1,000	53	36000
SS-30	3"	16	500	56	24000
SS-35	3 1/2"	16	500	68	18000
SST-15	1 1/2" TAPERED	16	1,000	57	36000
SST-35	3 1/2" TAPERED	16	500	68	18000

FLEX COLLARS

(Roof Jacks/Flashings)
Galvanized base/neoprene collar.



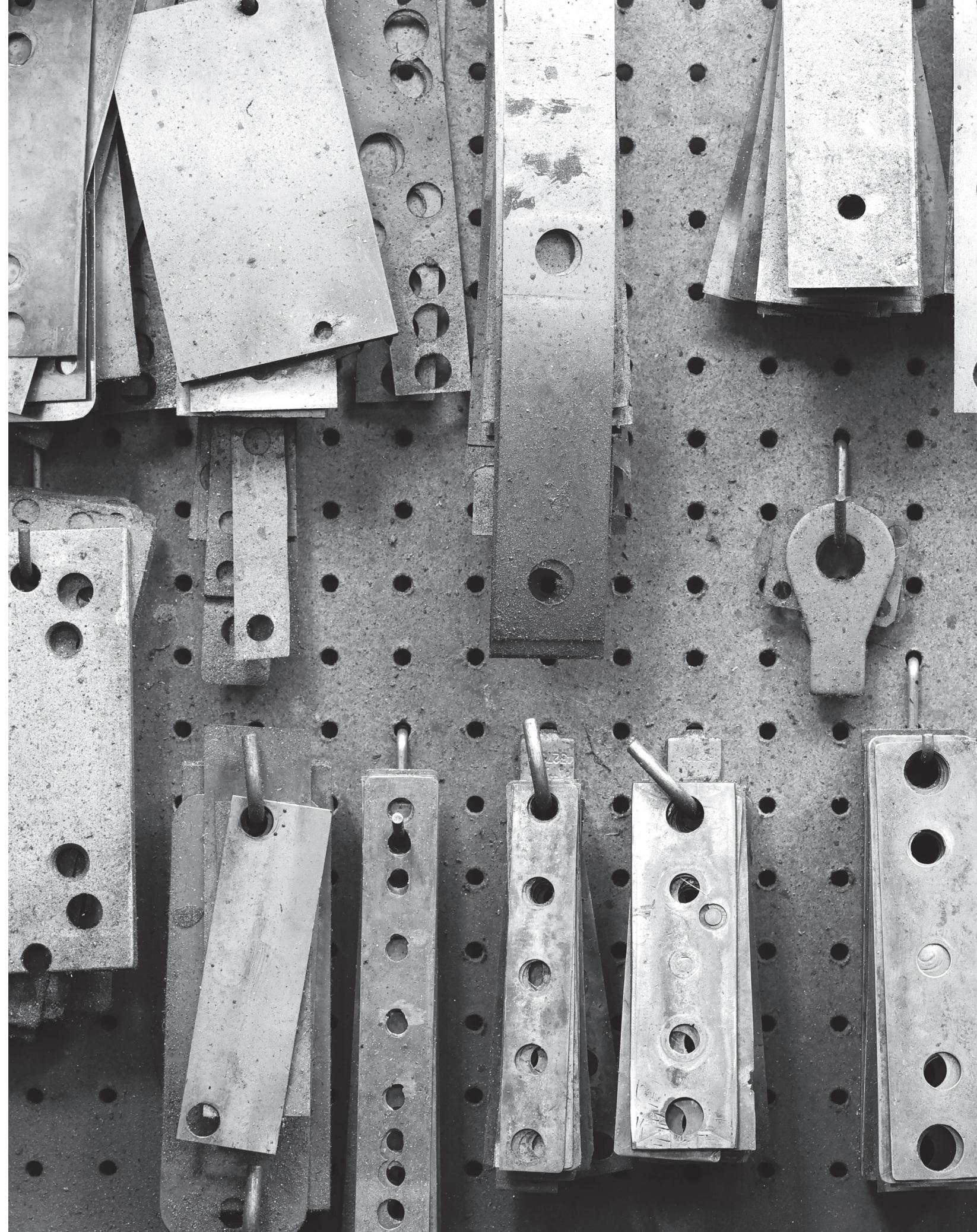
CATALOG NO.	DESCRIPTION	COLLAR SIZE	GA	CASE QTY.	WEIGHT
YMF1	9" x 12" BASE	1/2" - 1"	26	18	13
YMF2	9" x 12" BASE	1-1/4" - 2"	26	18	13
YMF4	12" x 16" BASE	2-1/2" - 4"	26	8	12

TIE WIRE

Steel 16 Gauge.

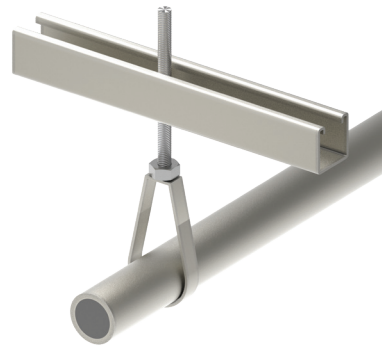


CATALOG NO.	DESCRIPTION	COLLAR SIZE	GA	CASE QTY.	WEIGHT
TW16400	ANNEALED	400 FT	16	20	80



SWIVEL HANGERS

Use with 3/8" rod.



CATALOG NO.	DESCRIPTION	CASE	WEIGHT PER 100
SH050	1/2"	100	8
SH075	3/4"	100	9
SH100	1"	100	10
SH125	1-1/4"	100	12
SH150	1-1/2"	100	12
SH200	2"	50	7

CLEVIS HANGERS

Use with 3/8" rod.



CATALOG NO.	DESCRIPTION	CASE	WEIGHT PER 100
CH050	1/2"	100	10
CH075	3/4"	100	11
CH100	1"	100	18
CH125	1-1/4"	100	21
CH150	1-1/2"	100	23
CH200	2"	50	15
CH250	2-1/2"	25	12.25
CH300	3"	25	14
CH400	4"	25	22



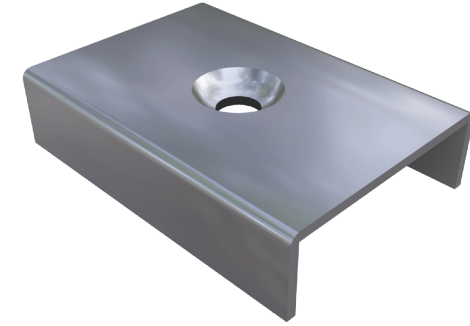
VENT PIPE HANGERS

For Type B Gas Vent Pipe. **Galvanized.**



CATALOG NO.	DESCRIPTION	GA	CASE	WEIGHT	PALLET
VPH300	3" x 3-1/4" x 1-1/4"	18	6	2	960
VPH400	4" x 4-1/4" x 1-1/4"	18	6	2	960
VPH500	5" x 5-1/4" x 1-1/4"	18	6	3	960
VPH600	6" x 6-1/4" x 1-1/4"	18	6	4	960
VPH700	7" x 7-1/4" x 1-1/4"	18	6	5	960
VPH800	8" x 8-1/4" x 1-1/2"	18	6	6	960

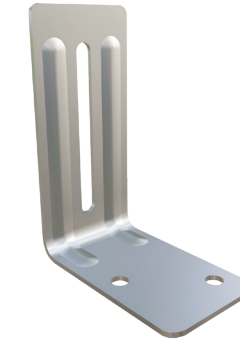
CPVC HANGER NUT



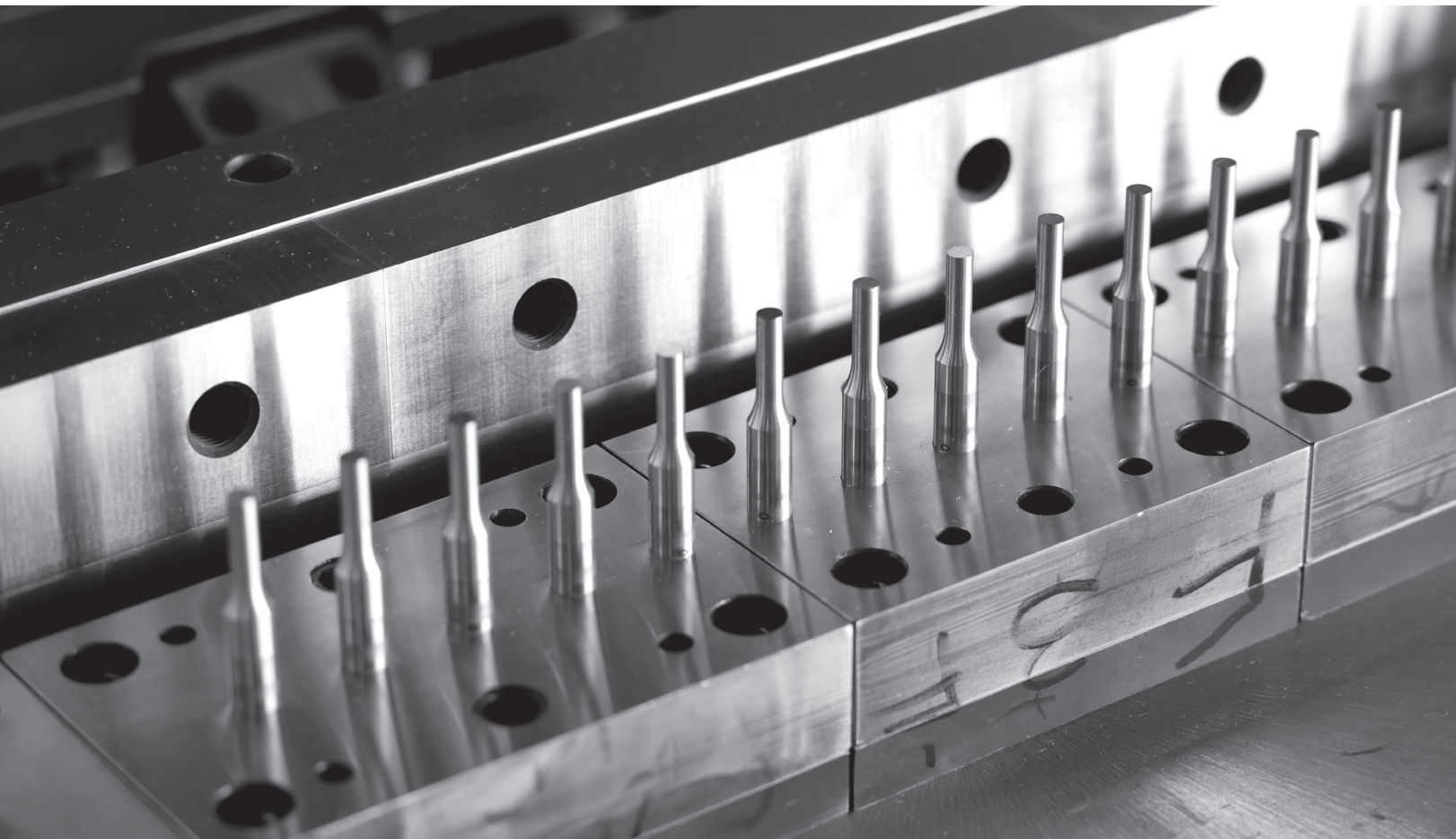
CATALOG NO.	DESCRIPTION	GA	CASE QTY.	CASE WT.
CPVC NUT	1 1/4" x 1 3/8"	22	500	3

SLOTTED L BRACKET

Used to anchor heat pump units.



CATALOG NO.	DESCRIPTION	GA	CASE QTY.	CASE WT.
SLB150	1 1/2" x 2 7/8"	16	500	12



**QUALITY METAL STAMPINGS FOR THE
BUILDING INDUSTRY AND BEYOND**

1652 N. 32nd St., Springfield, OR 97478
www.MetalProducts.com